

Parish Profile 2025

Worship, Welcome and Witness



St Peter's Church, Little Aston

Roman Road, Little Aston, B74 3AT

St Peter's Parish Profile

Worship - Welcome - Witness

Contents

Introduction	2
Context	2
Mission Statement and Challenge	3
Role Description	4
Person Specification ..	5
Ministry Team.....	6
Training.....	6
Services.....	6
Pastoral Care.....	7
Children and Young People.....	8
Schools	8
Pastoral Offices	9
Music at St Peter's....	10
Communication.....	10
150 th Birthday Celebration.....	11
What else do we do?	12
Social Events.....	14
A Month at St Peter's (May 2025).....	15
Finances	16
Church Buildings and History.....	17
The Parish.....	19
Local Amenities	19
Parish Map	20

Introduction

Thank you for looking at the Parish Profile for St. Peter's Church, Little Aston. We hope that it will give some insight into the opportunities and challenges as we grow again post-COVID.

We are ready to move on in faith and discipleship and are looking for someone who will work with us to shape our future - led by the Holy Spirit.

Context

We are a single church parish and benefice in a semi-rural area of Lichfield, Staffordshire. A large proportion of the congregation live outside the parish so we are at present more a gathered church from a diverse range of backgrounds rather than a parochial church.

We are a vibrant church which enjoys more traditional styles of worship. We have a robed choir at our main services. We are excited by the possibility of opening up God's word in different ways and value good teaching and preaching which takes the bible seriously.

The average weekly attendance across 3 Sunday services and 1 mid-week service is in excess of 120. Service styles vary from BCP at the 8.00am Sunday service; Common Worship at 10.00am; with Compline, Evensong, Communion, and Healing Services on a rotational basis at 5.00pm.

We are being sustained during the interregnum by the support of an Ordained Local Minister with Permission To Officiate, two Lay Readers, and visiting clergy, and we are continuing to flourish.

Little Aston is within half an hour of Birmingham and of Lichfield by a regular train service, and within easy reach of the Midland motorway network.

There are reputable primary and secondary schools in the area. The local primary school is just round the corner from the Vicarage, and links have been built with Little Aston Pre-School. Grammar Schools are accessible by public transport. There are local shops nearby, and Mere Green, Sutton Coldfield and Aldridge provide a choice of shopping centres. There are plenty of leisure facilities available and Little Aston has a thriving Village Hall which is used for many and varied community activities.

Mission Statement and Challenge

Our mission

Our mission is to grow in faithfulness in response to our calling to follow Jesus Christ and live for Him in the world. We seek to do this in three key ways:-

Worship - sustain and develop our worship together and to experience God's love for us.

Welcome – welcome everyone whatever their gifts and needs.

Witness - we want our worship and welcome to spill out into the community and beyond. The Church building is the resource that enables us to develop and sustain the congregation.

The challenge

We are looking for someone to lead and help us to respond to challenges.

- As a spirited church community we recognise the challenge to work on moving forward with support from the new incumbent.
- Re-energising faith and developing discipleship in response to the Word of God.
- To take more seriously our call to be generous with time, money and mission.
- To develop better relationships within the community.
- To be open to the different experiences and skills that people may bring to our church life.
- To find new opportunities for gathering and worship that encourage a wider group. e.g. developing our follow-up for Baptism, Confirmation, Wedding and Funeral services.
- And future challenges.



Role Description

Mission and Outreach

- To help us to address and discern the opportunities for engaging more fully with all ages of the community.
- To relate with the churches around us.
- To help us identify different ideas and become alive to new opportunities for Church and worship, e.g. Generation Z.

Leadership and working collaboratively

- To help us identify gifts among our congregations.
- To take a lead in training and empowering people to take on new roles.
- To help people to grow in discipleship.

Worship and Preaching

- Leading worship and preaching that is reverent, celebratory and shaped by the Word of God.
- Using a wide range of resources in leading worship.
- Working with us to plan and deliver high quality teaching relevant to all stages of our Christian journey.

Pastoral Care

- Take a lead in Baptisms, Confirmation, Weddings and Funerals and develop a programme of following up contacts made through these offices.
- Help develop and facilitate appropriate training for the pastoral care team.
- Provide support and encouragement for existing prayer.

Stewardship and Organisation

- Lead the PCC.
- Encourage generosity in giving of money, time and talents.
- Co-ordinate a voluntary administration team. We are open to the possibility of exploring some administrator support, should it be required.

What we can offer you

- Encouragement of personal and spiritual development.
- Support work/life balance e.g. regular days off and holidays.
- In addition to paying usual expenses, we are open to funding retreats and other potential expenditures at the discretion of the PCC.
- Support with our prayers both as individuals and as a church.



Person Specification

Essential qualities

- Proven ability in shaping and following through a vision.
- Well rooted in Scripture.
- Proven communication and listening skills.
- Able organiser.
- Ability and willingness to work with the congregation and Ministry Team.
- Commitment to regular prayer.

Desirable

- Previous experience of Baptism, Confirmation, Wedding and Funeral follow up schemes.
- Experience of delivery of teaching material.
- Experience of a range of worship resources.

We have been using this prayer publicly and privately during the vacancy and it forms the basis of the role description and person specification.

PRAYER DURING THE VACANCY

Shepherd of souls, grant to us for the leadership of your Church in this parish,
A person after your own heart.
A priest of faith and prayer filled with the Spirit.
A leader of vision, wisdom and sound judgement.
A carer with a pastoral heart and a true love for people.
Prepare the person of your choice for ministry among us and prepare us to welcome a new chapter
in our lives too.
May all be accomplished by the doing of your will and for the furtherance of your glory, through
Jesus Christ our Lord.
Amen –



Ministry Team

- 1 Ordained Local Minister with Permission To Officiate
- 2 Licensed Readers (1 of whom is a Waterways Chaplain)
- Wedding Verger
- Baptism Verger
- Funeral Verger
- 10 Regular Servers

Historically the Ministers and Church Wardens held regular monthly meetings for service planning, support and prayer.

Training

Members of the congregation have previously been involved in the following training: Bishop's Certificate, Lent courses, ALPHA course and Life on the Front Line (LICC - London Institute Contemporary Christianity).

Services

Services	
Sunday	8:00 Holy Communion - Book of Common Prayer
	10:00 Holy Communion - Common Worship in line with the Church Calendar
	17:00 Evensong/Holy Communion/Compline/Healing Service – Common Worship/BCP/appropriate booklets
Wednesday	9:30 Holy Communion - Common Worship
Children	Breakfast Church – First Sunday in the month at 9am Activity Boxes available at all services for children Prayer group meet monthly to pray for the children and young people of the Parish
Special Festival Services	Holy Week Services St Peter's Day Harvest Festival Service of Remembrance Friends Remembered (Annually in November) Christingle Service Nine Lessons and Carols Christmas Eve Family Carol Services Christmas Midnight Communion Christmas Day Services

The age of the congregation ranges from newborn to nonagenarians but the congregation is predominantly a mature congregation.

Average Sunday Attendance	Year	Adults	Children
	2024	96	6



Congregation Split 2024/5

Electoral Roll Total	175	
In Parish	65	37%
Out of Parish	110	63%



Pastoral Care



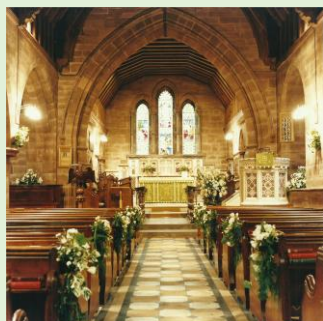
Pastoral care is a very important aspect of life in this church and we have an active team who arrange visits and transport for less mobile members of the church. Home communion is regularly taken to individuals and care homes by authorised members of the congregation.

We publish a church directory for people to easily get in touch with each other which has around one hundred and fifty entries, and we have set up a befriending scheme within the church community. We publish a prayer list in the weekly Welcome to Worship for people in need of prayer support. They are prayed for during the service and the congregation are invited to include them in their own private prayer during the week.

We also have a prayer chain where people can privately request focussed prayers from a small group of volunteers to support fellow members of the church at crucial moments.

The incumbent is involved in baptism, confirmation and wedding preparation with lay assistance and there is a Bereavement and Friendship group who have an informal monthly meeting for people to meet others in similar circumstances. We organise an annual Friends Remembered Service, inviting bereaved families to remember their loved ones, which is always a very popular service.

In line with the Church of England warm space initiative we began a Winter Warmer coffee morning which ran from October to March. As the end of March approached, we were asked to keep it going so we now meet every week on a Tuesday morning. Now known as Tuesdays Together, there are often twenty to thirty people attending.



Children and Young People

Post Pandemic, the various activities for the younger members of our Church Family have sadly diminished. We have recognised that to bring the young people and families into church, we need them to feel welcome and to have built friendships. We have set up a Breakfast Church group which meets on the first Sunday of the month at 9am before the 10am service, and all families are welcome to come and enjoy some breakfast whilst getting to know each other.

We also have a collection of activity boxes at the back of church which contain colouring and wordsearches. Children are given one of these boxes when they arrive and can take it to their pew to keep themselves occupied during the service.

We organise a Christingle Service for families on the 1st Sunday of December as well as a Family Carol service on Christmas Eve at 4pm which is usually very full of families of all ages.

The work of the Children's Team is supported by a monthly Prayer Group who meet in person.

In all our activities, we aim to sow the seeds of a knowledge of and faith in God that will develop and mature as these children and young people grow up and move through the different stages of their lives



Schools

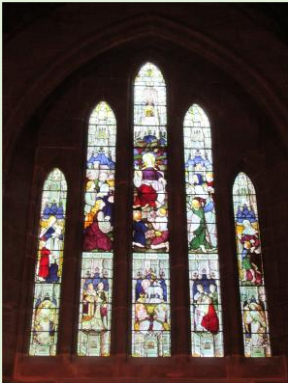
Little Aston Primary School:

The local school is not a Church school and although it has no formal links with St Peter's, they are welcomed by the incumbent to the Church for special services organised and led by the school leadership team.

Little Aston Pre-School:

Whilst independently providing a nonsecular education to pre-schoolers, this group, based at the Village Hall, are very committed to working with the local community and have been to services at St Peter's and welcomed our previous incumbent to visit them.





Pastoral Offices

The Church's Guidelines for Pastoral Offices are as follows:

Weddings:

We follow the Church of England guidelines for qualifying connections. Permission for divorcees wishing to remarry is at the discretion of the Vicar.

Baptisms

We follow the Church of England guidelines for qualifying connections.

Funerals in Church

Deceased must have lived in the Parish, been on the electoral roll or been a member of the congregation.

Burial in the Churchyard

Deceased was on the electoral roll or resident in the Parish at the time of death. We are limited to 8 burials per year due to the water table in the churchyard.

Burial of cremated remains

The policy is more flexible and meets similar criteria but not so rigidly. We have occasionally accepted a request to have remains buried in the churchyard on compassionate grounds.

Service	Year	Number
Weddings	2024	4
Blessings	2024	2
Baptisms	2024	9
Confirmations	2024	1
Funerals in Church	2024	21
Funerals at Crematoria	2024	2



Music at St Peter's

Choir

The robed choir comprises all four parts - soprano, alto, tenor and bass - and has twelve to sixteen long-term members. They are a main contributor to the Nine Lessons and Carols Service and lead the singing at the 10am Sunday services, some weddings and funerals, and perform an occasional anthem. We have an Organist and Choirmaster, and weekly choir practice takes place on Thursdays at 7:30pm.



Organ

The Harmsworth organ was rebuilt in 1957, and renovated in 1978. More recently the organ was renovated in 2007. We are fortunate to have an Organist plus a congregation member who stands in and plays when the organist is away. We also have a piano in church.

Communication

Welcome to Worship

The Welcome to Worship pamphlet is produced weekly and given out at all church services with details of the next week's services, events and meetings. It is also distributed by email. The readings for each Sunday are also included so the congregation can follow them during the service and take them home. A list of the members of the congregation, their friends and family who are in need of our prayer is also included. It is an effective way of conveying notices and information to all those who attend the different services.

Social Media

We have a website and an active Facebook account to help us reach out to past, present and new members of the congregation and to keep the local community up to date with what is going on at St Peter's (links to both are in the footer section). These are maintained and controlled by nominated competent persons.



150th Birthday Celebration

In 2024 we celebrated the 150th anniversary of St Peter's Church, and there were many social and church events which included both the congregation and parishioners past and present. The celebrations took place from March to November and culminated with a thanksgiving service on the 19th November to mark the date of the consecration of St. Peter's.

Whilst having an inspection of the church roof by drone, we organised a fly through of the church to be made into a film accompanied by the sound of our bells and music from our organist. At a service of celebration presided over by Bishop Michael, we arranged for the drone to visit again and capture the whole congregation outside the church. [St. Peter's Church, Little Aston Drone Video May 2024](#)

Memories of events and photographs over the years were collected and made into a display for everyone to view in our church room which inspired many conversations and reminiscences. Work is ongoing to create a book of these memories to be kept for posterity.

The parish enjoyed a wonderful evening of reflection on the lives of all the incumbents since 1874, brilliantly researched by a longstanding church member, which was created into a keepsake booklet. One of our Lay Readers walked us through the whole of Mark's gospel, and our final event was the presentation of Peggy Knight, an SOE operative in World War II, by local historian Lesley Smith.

We also held a 'Noughties' party for anyone celebrating a birthday with a zero on the end, which filled the village hall with birthday celebrants from 10 to 90 years old and their well wishers.



What else do we do?

We have many committed members of the congregation voluntarily leading groups and providing support to the ministry team.

SACRED

(Simply **A** Chapter **R**ead **E**ach **D**ay)

SACRED is a Bible Reading and Study Scheme developed by a past incumbent. A discussion group meets monthly in the church room to reflect on what they have read and discuss a set of questions based on the readings for the past month.

Prayer Team

There is a rota of people leading Intercessions and a dedicated prayer team available during the 10am service for confidential prayers for those who come forward during Holy Communion. Additionally, there is a prayer chain for any emergency needs that occur and a list of people needing prayer is published on the weekly Welcome to Worship sheet.

Deanery and Diocesan Synod

We are committed to supporting Deanery Synod and have three Deanery Synod Representatives. One Synod representative is also Deputy Lay Chair of Deanery Synod. We also have two members of the Diocesan Synod.

Mothers' Union

St Peter's has a very active Mothers' Union who meet on the fourth Thursday afternoon in the month (except August) with a variety of speakers, and sometimes these meetings are open to the wider congregation. It also hosts the St Peter's Garden Party in July, which is their major fundraiser of the year. A Christmas lunch is held at various venues and, in December an advent carol service is held. Members help with other groups in our church, and we are always keen to encourage new members.

Flower Guild

Members of the congregation take responsibility for providing and arranging flowers at the altar on a weekly basis and a small team decorates the whole Church for special festivals in an imaginative way.

The Welcome Team

A team of people take turns to meet and greet the congregation as they come into Church at the 10am Sunday service. Sidespersons fulfil this role at other services.

Knit and Natter

Over the past ten years the Knit and Natter group have produced blankets and clothing for local neonatal units. They also support areas of conflict in the world by knitting blankets and they recently knitted hats for a charity which supports farmers' mental health and helps those who attempt, and on many occasions commit suicide. Newcomers always welcome - a lovely way to spend an afternoon and the nattering is great!



Hand Bell Ringers

The hand bell team was started in 1976 and over the years they have had fun ringing a wide range of music from "Last of the Summer Wine" through to waltzes like The Blue Danube. They meet in the church room on Monday evenings at 7.30pm for practice and are regularly requested for concerts at churches, clubs and venues throughout the year. The team also ring a carol during the Nine Lessons and Carols service at St Peter's.

**SPOGS**

St Peter's Older Gentlemen have monthly dinners at local pubs for fellowship and goodwill. These take place on the last Thursday of every month and all men are welcome to join.

Keep Fit

A mixed group of twenty people from the congregation, and the wider community, meet every Friday at 10.15am in the Church Room to go through a relaxed fitness regime with a qualified fitness instructor. Ages range from early sixties to early nineties. The instructor encourages them to improve mobility and balance in order to enjoy a more fulfilling lifestyle which is important as one gets older.

Film Club

The Film Club meets once a month on a Saturday evening at 7.00pm in the church room. Everyone is welcome. They aim to show a selection of films including action, comedy, romance, period dramas and some of the old classics. It's a very sociable evening and an opportunity to invite friends who do not belong to the church.

Tuesday Together

A weekly opportunity in the church room open to anyone who wishes to join together for refreshments, chat, quiz and fellowship, which evolved from the very popular Warm Spaces initiative. The success of this showed how much this fellowship and provision is valued.

Bereavement and Friendship Group

A monthly support group for anyone who has been bereaved and would welcome a friendly chat.



Beating the Bounds

An ancient tradition covering a 9-mile walk around the Parish boundary on Rogation Sunday, stopping for a picnic lunch at Hill Hook Local Nature Reserve. After a short break, this was reintroduced in 2024 to mark the 150th Anniversary of the consecration of St. Peter's.



Social Events

Shrove Tuesday

Pancake Lunch and Supper with Jacket potato and salad in the church room, served by a diligent volunteer team.

Lent Lunch

Every week throughout Lent; homemade soups, roll and butter followed by fresh fruit and tea or coffee are served in the church room. Donations are collected for charitable purposes.

St Peter's Day Lunch

A lunchtime meal served at the Village Hall, usually two courses followed by tea or coffee. This very popular event fills the Village Hall and is run by a team of volunteers.

Harvest Lunch

A meal served at the Village Hall by the same team that run the St Peter's Day Lunch; usually two courses followed by tea or coffee.

Christmas Fayre

This is held in the church room, usually the last Saturday in November. It starts at 11.00am with various stalls, the most popular being the bottle tombola and the chocolate tombola. This is a good fundraiser for the church; the proceeds of the Fayre in 2022 helped us to buy new tables for the church room.



A Month at St Peter's (May 2025)

Sun	Mon	Tue	Wed	Thu	Fri	Sat
27th April 8:00am Holy Communion 10:00am Family Service 5:00pm Evensong	28th 2:00pm Knit & Natter CR 7:30 pm Hand Bell Ringers CR	29th 8:00pm Bell Ringing	30th 9:30am Holy Communion	1st May 7:30pm Choir Practice	2nd 10.30am Keep Fit CR	3rd
4th 8:00am Holy Communion 9:00am Breakfast Church CR 10:00am Family Service 5:00pm Evensong / Healing Service	5th 2:00pm Knit & Natter CR 7:30 pm Hand Bell Ringers CR	6th 10:00am Tuesdays Together CR 2:00pm SACRED CR 7:30pm APCM CR 8:00pm Bell Ringing	7th 9:30am Holy Communion	8th 7:30pm Choir Practice	9th 10.30am Keep Fit CR	10th 9.30am Churchyard Working Party
11th 8:00am Holy Communion 10:00am Family Service 5:00pm Compline	12th 10:00am Pastoral Care Meeting CR 12:00pm Wedding 2:00pm Knit & Natter CR 7:30pm Hand Bell Ringers CR	13th 10:00am Tuesdays Together CR 2:30pm Prayer for Children's Ministry 8:00pm Bell Ringing	14th 9:30am Holy Communion 7:30pm PCC Meeting CR	15th 10:30am Bereavement/Friendship Group CR 7:30pm Choir Practice	16th 10.30am Keep Fit CR	17th
18th 8:00am Holy Communion 10:00am Family Service 5:00pm Evensong	19th 10.00am Friends of St Peter's Meeting CR 2:00pm Knit & Natter CR 7:30pm Hand Bell Ringers CR	20th 10:00am Tuesdays Together CR 8:00pm Bell Ringing	21st 9:30am Holy Communion	22nd 7:30pm Choir Practice	23rd 10.30am Keep Fit CR	24th
25th 8:00am Holy Communion 10:00am Family Service 11.00am Beating the Bounds Walk 12.30pm Baptism 5:00pm Holy Communion	26th 2:00 pm Knit & Natter CR 7:30pm Hand Bell Ringers CR	27th 10:00am Tuesdays Together CR 8:00pm Bell Ringing	28th 9:30am Holy Communion	29th 2.00pm MU Afternoon Tea CR 7:30pm Choir Practice	30th 10.30am Keep Fit CR	31st

CR = Church Room

Finances

We met the 2024 Common Fund of £67704 in full, and we ensure we meet that ongoing commitment to the Diocese.

Income is derived from Planned Giving with the majority from Bank Standing Orders and a growing proportion through the Diocesan Direct Giving scheme. Cash is also collected by the plate and a recent installation of a Contactless Terminal caters for Debit and Credit Cards.

We direct donations to other worthy charities which included The Leprosy Mission during 2024. The Lichfield Women's Refuge, Pathways, is supported by goods from Harvest and other occasions, and special collections are made for Christian Aid.

Recent major expenditure has been on specialist repairs to the marble floors, upgrading of both the lighting and the sound system, and installing Broadband that is available to all. Major expenditure during 2025 has been renovating the toilet facilities in the Church Room and fees relative to anticipated expense in connection with the Quinquennial Report.

Electric heating throughout is supplied by EDF on a fixed contract until 30.8.2026.

The Friends of St. Peter's operate their own subsidiary account that is incorporated within the main Income & Expenditure. Their assistance with the maintenance of the churchyard is invaluable.

There is a separate Endowment Fund that can be used for major works on the Victorian Grade 2 listed church.

We use MyFundAccounting.Online software for bookkeeping and for recording Gift Aid.

As a Registered Charity 1128819 the 2024 Report and Accounts can be found on The Charity Commission website.

<u>Income & Expenditure</u>			<u>Balance Sheet</u>		
	2024	2023		2024	2023
Income					
Donations & Legacies	120246	99469	Fixed Assets	1	1
Charitable Activities	13380	12946	Current Assets	133619	116565
Investments	6738	5178	Current Liabilities	-398	20
Other Trading Activities	1041	765			
	141405	118358		133222	116586
Expenditure					
Raising Funds	1938	1483	Represented by		
Charitable Activities	122831	116462	Unrestricted Funds	82501	70578
	124769	117945	Restricted Funds	50721	46008
Surplus	16636	413			
TOTAL	141405	118358	TOTAL	133222	116586



Church Buildings and History

Church

The church is built of local red sandstone to the design of the great Victorian architect George Edmund Street (1821-1881) and is noted for its fine Italian marble work. It was a gift to the people of Little Aston by The Honourable Edward Swinfen Parker Jervis of Little Aston Hall and consecrated in 1874. The vicarage and primary school were also gifted at the same time, however both have since been replaced.

St Peter's sits on a corner of land accessed from the private Little Aston Park Estate and has views across the countryside towards both Stonnall and Shenstone churches, our nearest neighbours within the Diocese.

Most recent work includes:

- Installing CCTV in the car park.
- Following the latest Quinquennial inspection, we are about to carry out some repairs to stonework, flashing and gutters; the necessary Faculty has been approved by the Diocesan Advisory Committee.
- The heating, lighting and sound system have all been upgraded within the last ten years.
- Electrical systems have been inspected and up-graded recently.

Churchyard

We employ a groundsman assisted by monthly work parties organised by the Friends of St Peter's.

The churchyard is an open churchyard, and recently the pathways have been re-laid and extended into the new churchyard extension.



Friends of St Peter's

The Friends of St Peter's contribute a regular payment which is set aside specifically towards the maintenance and improvements of the churchyard and grounds.

Monthly work parties are organised by the Friends to keep the churchyard and car park tidy, and they are creating a wildflower meadow and composting area within the churchyard extension.



Bells

The original five bells were cast in 1873. In 1949 a treble bell was cast and added, the original five were retuned and all six the bells were rehung within a new steel frame.

There are ten regular ringers who are normally able to ensure all six bells are rung for both the 10.00am and 5.00pm Sunday services. At Christmas and Easter they also ring for the 8.00am service. Practice nights are on a Tuesday.



Church Room

St Peter's Church Room is situated in the Church grounds and can comfortably seat approximately fifty people around tables. It has a kitchen and serving area and is used for regular church groups and weekly for refreshments after Church services. As a Church we have free use of the Little Aston Village Hall six times per year for larger events.

The church room toilets have recently been refurbished and their accessibility improved.



Vicarage

The vicarage is a four bedroomed detached family home with a garage, driveway and enclosed mature garden. The property has a large welcoming hallway, leading to a through lounge with feature fireplace and a separate dining room, breakfast kitchen with a separate utility and WC, and access to the garage. Upstairs there are four double bedrooms and a family bathroom. On the ground floor there is a separate study at the front of the property with a direct view of the church, which is within a five minute walk. The property features double glazing, central heating and has broadband installed.





[Little Aston Primary School](#)



[King Edward VI School Lichfield](#)



The Parish

In addition to its semi-rural location, Little Aston is only half an hour away from the centre of Birmingham by train and twenty minutes from Lichfield in the other direction. It is within easy reach of the motorway networks - M42, M6 and M5. Nearby Four Oaks, Mere Green, Streetly and Aldridge have thriving local communities, and new residents and their families have extensive opportunities to meet new friends and quickly become part of the community. Little Aston is twinned with St Georges-Sur-Baulche, in the Burgundy region of France, with exchanges taking place each year.

Little Aston has developed enormously over the past fifty or more years. New houses have been built on land that was previously farmland and the population of the Parish has increased accordingly. These developments have provided a balance to the many large, gated, properties within the Little Aston Park private estate surrounding Little Aston Hall which itself has been converted into luxury flats. Little Aston has a Spire hospital, nursing home and several retirement developments within Little Aston Park, in addition to several other retirement developments and care homes within the Parish

Local Amenities

There are reputable primary and secondary schools in the area, and Grammar Schools accessible by public transport.

The nearest park is maintained and funded by the Little Aston Recreation Ground Association (LARGA) and has excellent play facilities. LARGA runs the annual Party in the Park which is a highlight of the year and the group's major fund raiser.

Little Aston has a Village Hall which is used for many and varied community activities. It has recently been refurbished and further improvements are underway to create another meeting space. It also hosts a bowls club and three all weather clay tennis courts. It is managed by a committee of elected local people and representatives of the principal users and a number of church members are involved in the day-to-day operation of the Hall.

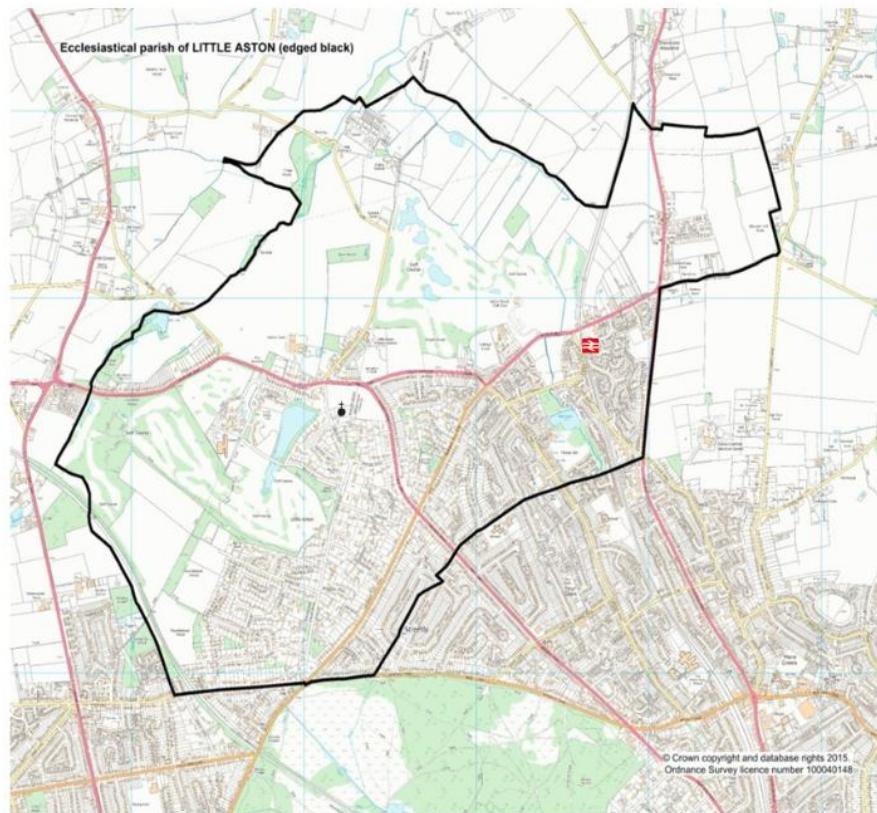
There is a prestigious golf club in Little Aston Park where the incumbent has honorary membership. There is another golf club, Aston Wood, within five minutes' drive from the vicarage.

Wyndley Leisure Centre and Sutton Park are within fifteen minutes' drive and offer full sporting/swimming and outdoor recreation facilities

There are many other things to do in and around the Parish and further afield in Birmingham and Staffordshire. The links on the left will take you to the main information sites.



Parish Map



In our Parish Profile, we have tried to convey something of the work that God is doing in our Church and Parish.

If you think that God may be guiding you towards St Peter's as the next step in your ministry, we look forward to hearing from you.

