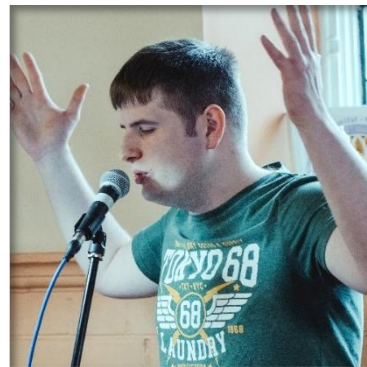


St Andrew's Church Sneyd Green

Stoke-on-Trent

Parish Profile 2026



- Welcome
- Vision and Identity
- The History of St. Andrew's
- Church Life
- Worship
- Who we are looking for
- Opportunities for Growth
- Buildings
- The Local Area
- Contact Us

Contents

PARISH PROFILE
ST ANDREW'S CHURCH,
SNEYD GREEN

Welcome

Thank you for taking the time to read our new Parish profile

Within these pages, we hope you will discover a reflection of our love for God, our commitment to one another, and our dedication to the wider community

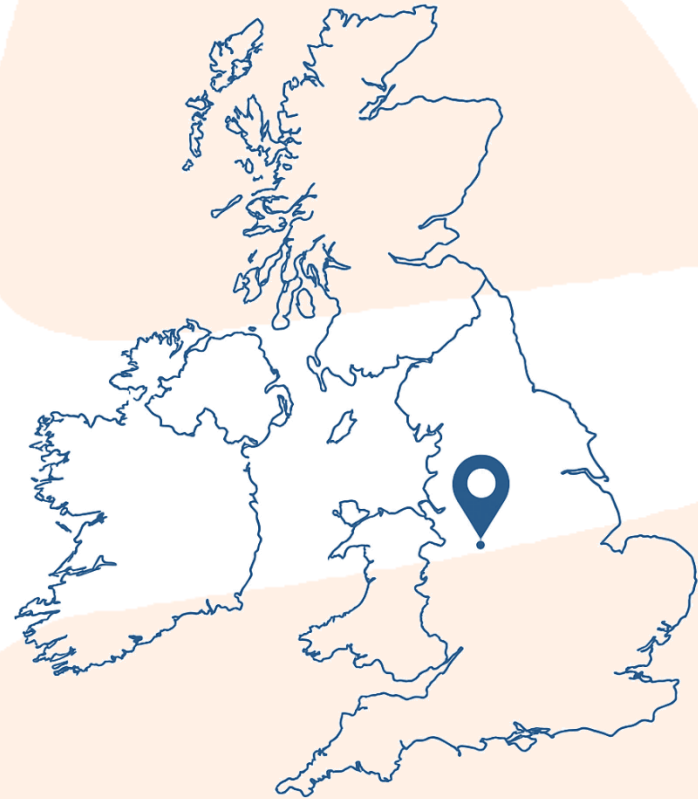


Location

St Andrew's is a warm, welcoming, and lively church located at the heart of the village of Sneyd Green, just a short distance from Stoke-on-Trent city centre.

Stoke-on-Trent is a distinctive and historic city, surrounded by beautiful countryside and green spaces, and is proudly recognised around the world as the World Capital of Ceramics.

Centrally positioned within the United Kingdom, Stoke-on-Trent is ideally placed for travel. It lies only a few miles from the M6 motorway and benefits from excellent road links to the M1 and beyond via the A50, making it easily accessible for visitors and residents travelling from all directions.



St. Andrew's Church,
Sneyd Street,
Sneyd Green,
Stoke-on-Trent,
ST6 2NW



A photograph of the word "LOVE" spelled out in large, light-colored wooden block letters. The letters are arranged on a wooden surface. In the background, there is a window with a stained glass design featuring a central blue circular motif. To the left, a vase with pink and white flowers is partially visible. The overall scene is softly lit, creating a warm and intimate atmosphere.

LOVE

Vision and Identity

Our Vision

Our vision at St Andrew's is...

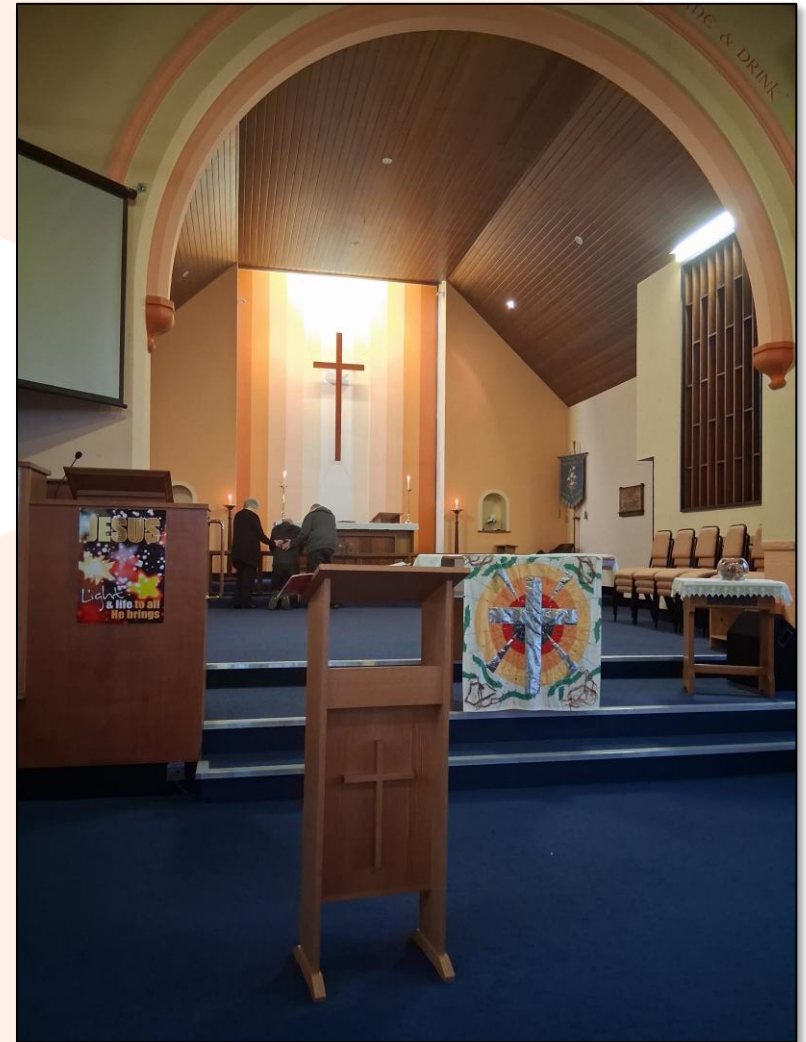
*To see people's lives and the
community of Sneyd Green
transformed by the love of
Jesus Christ*



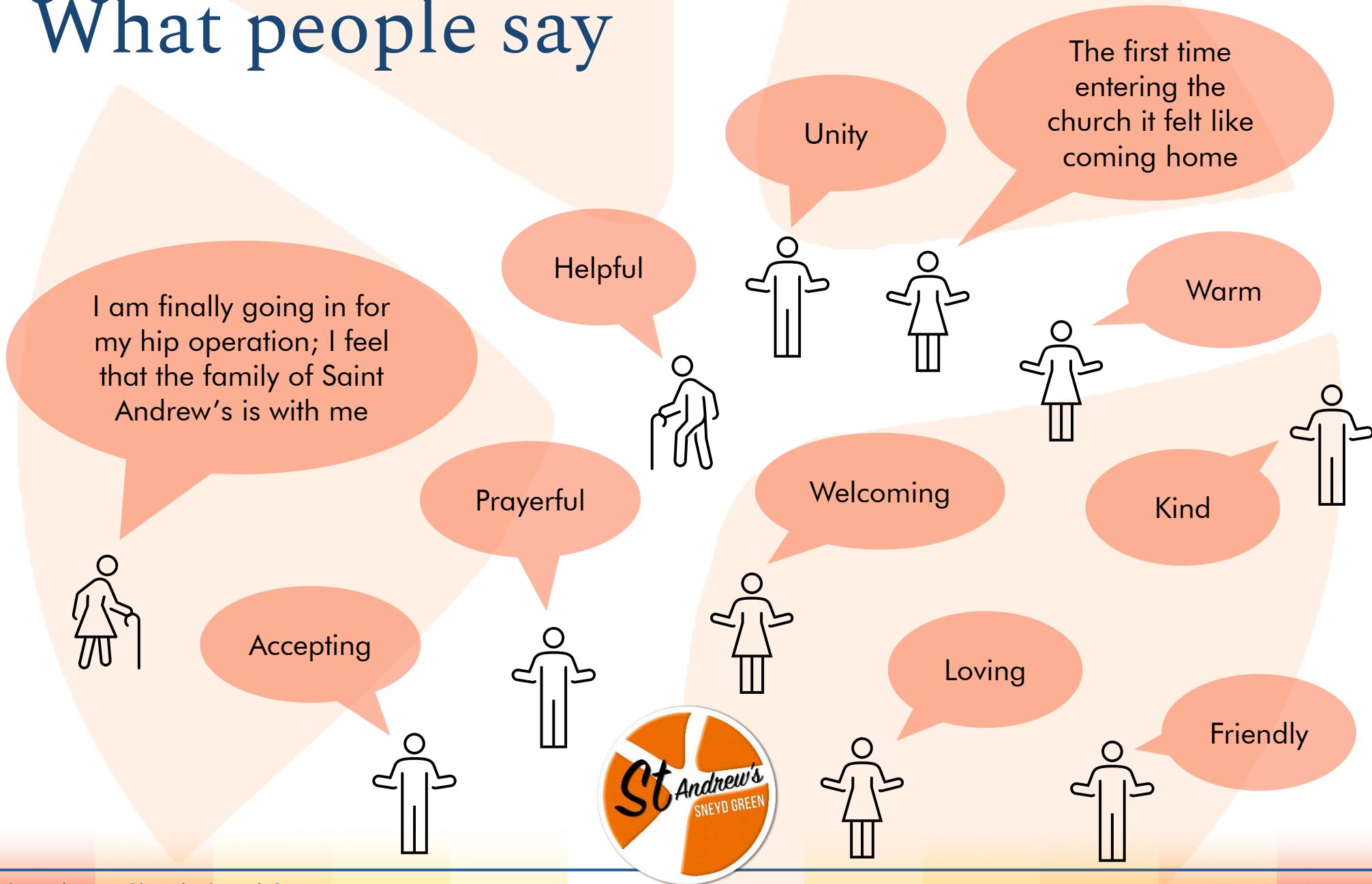
About Saint Andrew's

As the body of Christ in Sneyd Green, we are passionate about –

- Growing God's kingdom and are proactive in outreach and evangelism
- Investing in the lives of children and young people by encouraging and developing a ministry aimed at them
- Maintaining and developing a prayerful and worshipping spiritual life
- Creating and developing relationships with the local community and providing support wherever possible



What people say





THIS MISSION CHURCH
WHICH IS
ERECTED TO THE GLORY OF GOD
DEDICATED TO ST ANDREW
AND IN MEMORY OF GEORGE BATES
DE CONGRASS
WAS BUILT 1858

The History of St Andrew's

The History of St Andrew's

A Vision and a Planted Church

At the close of the nineteenth century, Sneyd Green was a small hamlet of cottages, farms, and a village inn

As the community rapidly grew at the turn of the twentieth century, so did the need for a place of worship and spiritual care

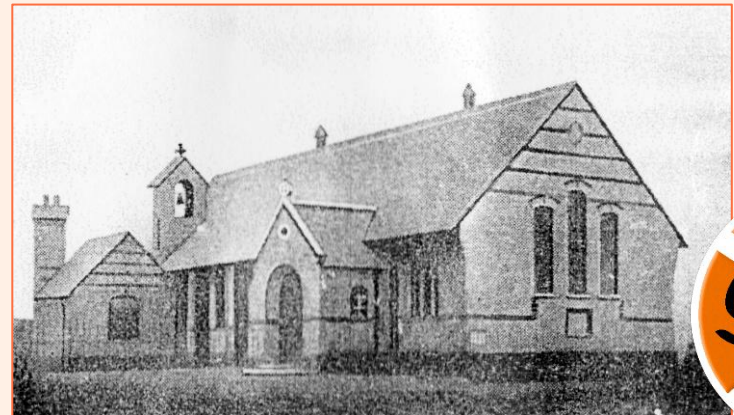
Inspired by this need, the Vicar of Cobridge, the Rev J W Alston, set out in faith to plant a church in Sneyd Green

Through the generosity of Mr George Bates and the dedication of many supporters, that vision was joyfully realised

In 1908 the foundation stones were laid, and on 28 January 1909, St Andrew's Church was proudly opened and dedicated—a lasting place of worship at the heart of the community



1908: Laying the Foundation Stone



The History of St Andrew's

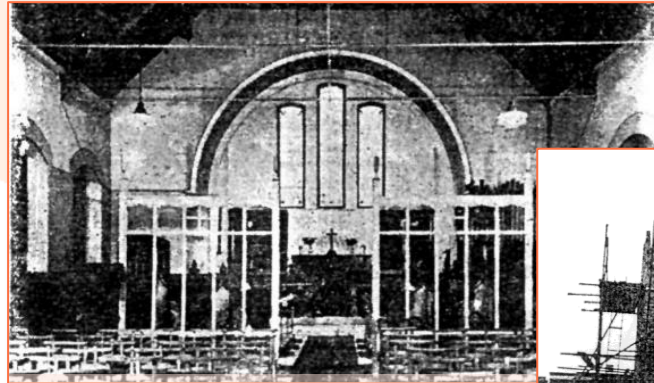
In 1946, a parsonage was built within the church grounds which was later extended to meet vicarage standards and in 1955, the church welcomed its first incumbent.

Major changes to the building took place in 1958 when the west end of the church was expanded and a new vestry and toilets were installed.

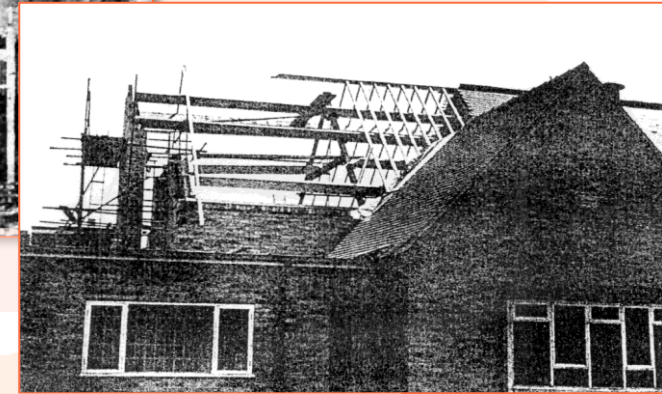
St Andrew's was consecrated as the Parish Church of Sneyd Green on 17th October 1962.

As the need for more flexibility (and comfort), chairs were brought in to replace the wooden pews in 1997.

2000 saw a new prayer room created from the space where the old organ pipes used to be.



Before the 1958 Extension



1958: Extension Work



1962: Holy Communion



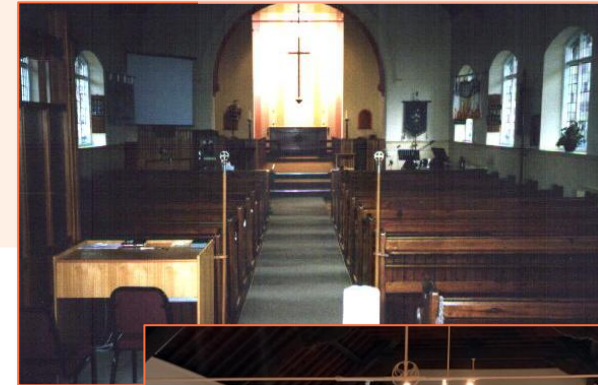
The History of St Andrew's

The history of St. Andrew's is not just about the buildings. As a church family we continue to move onward and try to meet the challenges of our busy modern lives and most importantly, to faithfully follow our mighty God along the road he has prepared for us.

As each Vicar has come and gone; they have made an indelible footprint on the church and community of Sneyd Green. God has provided for our needs in the past and we firmly believe that he will do so again.

Looking back with gratitude and forward with hope, St Andrew's continues its mission as a place of worship, fellowship, and service for generations to come.

St. Andrew's Church 1997



St. Andrew's Church 2026





Church Life

Regular Sunday Services

9:00 am

Holy Communion

A traditional eucharist with sermon for those who prefer a quieter, more contemplative time of fellowship.



10:30 am

Family Worship

A modern, lively and informal time of worship and fellowship with provision for children in their own groups in the church hall.

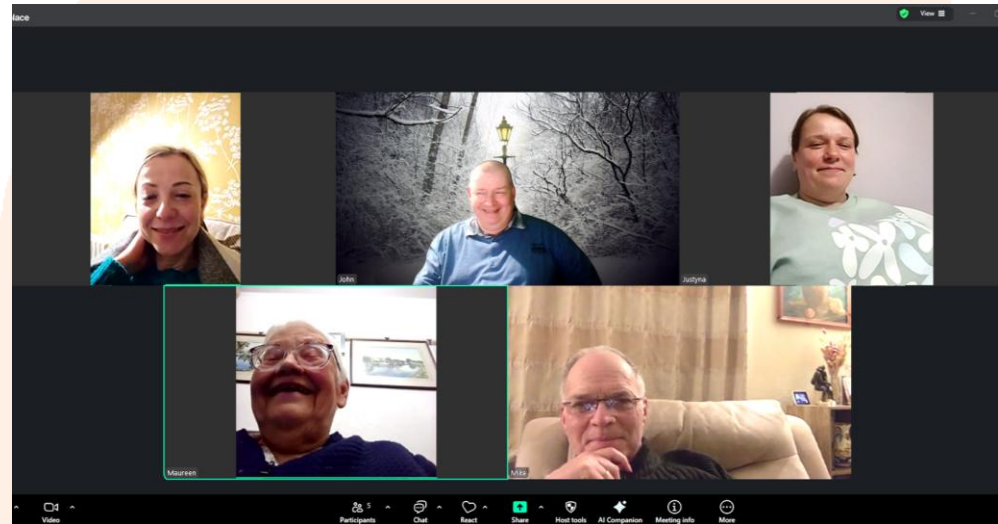


Midweek Growth Groups

Jesus is for life... not just for Sundays.

In addition to the worship, fellowship and teaching we share on Sundays, we have a number of 'Growth Groups' that meet together during the week. Most of these meet in people's homes and one meets online.

These are a great opportunity to study the Bible together, pray for each other, ask questions and grow together in faith.



The Star Community Café

As the United Kingdom began to emerge from lockdown after the Covid-19 pandemic, St. Andrew's Church shared a vision of creating a safe and welcoming space where people could meet again. Through the generosity and support of church members, that vision became a reality under an orange, star-shaped tent — the Star Café.



Open weekly and now meeting in the church hall, the Star Café welcomes people of all ages with hot food and drinks, including traditional Staffordshire oatcakes. Run by dedicated volunteers from the church congregation, the café provides a warm, friendly environment where the community can meet and connect.

Work with Young People

The congregation of St Andrew's Church is strongly committed to supporting and nurturing young people on their journey of faith in our Lord Jesus Christ and has invested significant time and financial resources to achieve this



The Church employs a Children's and Young People's Worker who oversees the children's and youth ministry, is actively involved in the children and youth groups run by St Andrew's, and additionally works with schools within the parish

Work with Young People

Testimonies

Natalie (School Year 6):

"I like it when we go to church for Christingle. I can feel the Christmas spirit and it helps me to understand Christmas time better and what it is about."

Luis (School Year 6) said he loves encounter because he loves the activities. He said when he has R.E lessons he is able to answer questions and talk about R.E themes. He likes the topics which relate to real life.

Aija (parent):

"We started going to St Andrews Church because my daughter knew and was familiar with the church's children's ministry leader who used to do assemblies and after school clubs at her school. My other daughter says it helps in a way that things feel more normal and familiar, and she can talk about it with her friends."

Bobby (age 4 and just started at nursery) said he loved 'Giggle and Grow' and 'Messy Play!' He loves the toys and the activities

Freddie (School Year 4) says.... He likes the special events like the pancake party and the Good Friday events. He said that he now enjoys getting involved with the questions during 'Encounter'. He really enjoys 'Encounter' and making new friends.

Collaboration with Local Schools

Holden Lane Academy is immensely proud of its longstanding and positive relationship with Saint Andrew's Church in Sneyd Green. Over the years, the partnership has flourished, with church members offering unwavering support across all aspects of school life. From serving as valued members of the governing body to attending school events and celebrations, their presence has enriched our school community. Notably, Saint Andrew's has played a vital role in delivering engaging assemblies, delivering lunchtime clubs and actively supporting the teaching of Religious Education, helping to foster a deeper understanding and appreciation among our pupils.

The collaboration extends beyond the school gates, as Holden Lane Academy has greatly enjoyed making regular visits to Saint Andrew's. These visits have brought Religious Education learning to life for our children, offering them unique opportunities to experience faith in action and to connect classroom learning with real-world practice. The welcoming atmosphere and thoughtful guidance from the church have made these occasions memorable and meaningful, creating lasting impressions that benefit both the pupils and the wider school community.

The positive work undertaken by Saint Andrew's Church in supporting the Sneyd Green community is truly commendable, and this community spirit goes hand in hand with the values and aims of Holden Lane Academy. The church's commitment to nurturing, guiding and helping those in need is reflected in our shared dedication to the welfare and development of young people. Together, we continue to build a partnership rooted in mutual respect, compassion and a collective drive to make a real difference in the lives of our pupils and their families.

Clare Jones

Principal (Holden Lane Academy, Sneyd Green)



Collaboration with Local Schools

Sneyd Academy has enjoyed a long-standing relationship with St Andrews Church. Over the years we have received support for our curriculum work alongside the opportunity to celebrate key Christian celebrations in church.

More recently our families in need have received support through the food larder and the pre- loved uniform stall. There have been times when I have been truly humbled by the generosity of the St Andrews congregation towards our families.

We have also partnered with St Andrews in community projects such as celebrating the jubilee for Queen Elizabeth II and the Stoke-on-Trent centenary.

I firmly believe that there are strong cornerstones that support a community to function well. One of those pillars is a school but another is the church. Working in partnership together, I believe that we are able to provide ably for the community of Sneyd Green.

We look forward to working together with the new vicar and in supporting our community well into the future.

Rosina Lee

Principal (Sneyd Academy, Sneyd Green)

Work with Young People

Sunday Morning Children's Groups



On Sundays, at the same time as the 10:30am Service we run a number of groups for children of all ages.

'Little Seedlings'
(Children aged 0 - 4)



'Engage'
(Children aged 5 - 11)

'Mighty Oaks'
for those in secondary school
(Starting in September 2026 as children move up to secondary school).



The groups run for three weeks a month, the fourth week being an All-Age service.

A creche space at the back of church has been made for younger children.



Work with Young People

Midweek Children's Groups



'Giggle and Grow' is a popular mid-week playgroup. Most weeks we are ministering to 20 to 34 babies and toddlers along with their parents or carers.



'Encounter' reaches out to many non-church children and is a weekly fun-based club with a short Christian talk/thought for the week and is for those who are in school years 4,5 and 6.



'Transform' is a drop-in café-style group, promoting a chilled relaxed atmosphere for youth (School Years 7-11) to offload, while engaging in creative activities.

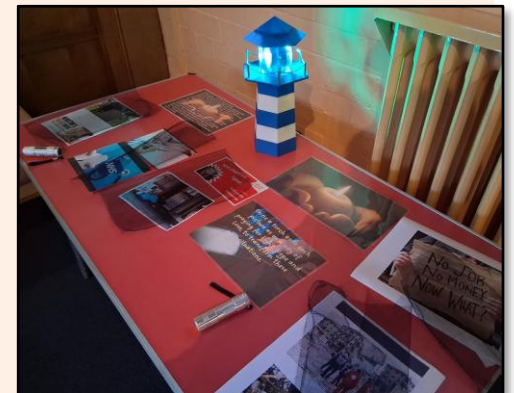


Work with Young People

Outreach Events

Organised by Children's and Young People's Worker the church runs exciting seasonal outreach events based at the church or church hall such as:

- A 'Narnia' Easter holiday club
- Family Pancake Party
- Messy Easter - Hot Cross Buns
- Advent Event
- Light party
- Messy play sessions during most half terms.



Work with Older People

At St Andrew's, we value people of all ages and firmly believe in the importance to support the elderly members of the community; many of whom live alone and get to see very few people during the week.



**GOLDEN
WONDERS**



Golden Wonders

Golden Wonders is a group of more mature ladies who meet every Tuesday in the Church Hall at the Star Café and chat, play quizzes and enjoy each others company, occasionally going out for a meal together.



Finance

St. Andrew's has always been able to pay the annual Common Fund Request in full. The church is mostly financed by regular congregational giving through an envelope scheme, direct debit, by a new contactless terminal and from occasional donations and bequests.



'But who am I, and who are my people, that we should be able to give as generously as this? Everything comes from you, and we have given you only what comes from your hand.

1 Chronicles 29:14

For many years, St. Andrew's Church has taught and lived out the principle of tithing by committing 10% of its income to support charitable causes locally, nationally, and internationally.

Bring the whole tithe into the storehouse, that there may be food in my house. Test me in this," says the Lord Almighty, "and see if I will not throw open the floodgates of heaven and pour out so much blessing that there will not be room enough to store it.

Malachi 3:10

Charitable Giving

In 2025, St. Andrew's Church gave 10% of it's income to the following charities;

Local Charities



<https://number11.org.uk/>



<https://www.ruffandruby.com/>



<https://crossrhythms.co.uk/>

National Charities



<https://capuk.org/>



<https://www.cpas.org.uk/>

NewWine

<https://new-wine.org/>

International Charities

Watoto

<https://www.watoto.com/>

fivetalents

<https://www.fivetalents.org.uk/>

Wycliffe Bible Translators

<https://wycliffe.org.uk/>

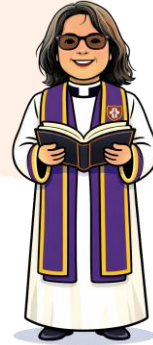
The Church in Numbers



Electoral Roll
56
(2025 – 2026)



Lay Reader
1



Ordained Minister
1



Lay Preachers
3



Worship Leaders
2 (plus visitors)



Weddings 1
(2025)



Baptisms 2
Thanksgivings 1
(2025)



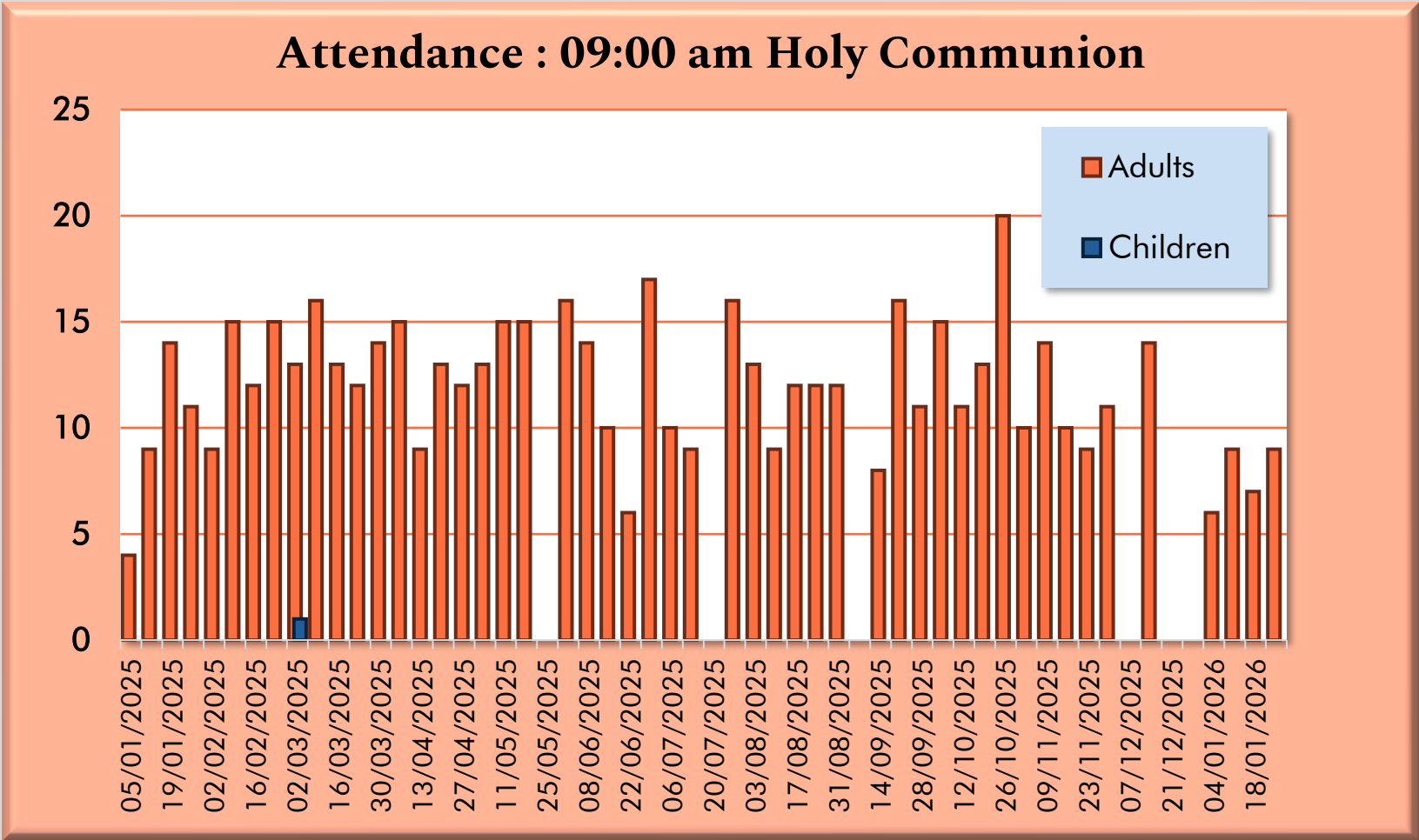
Confirmations 0
(2025)



Funerals 7
(2025)

Sunday Attendance

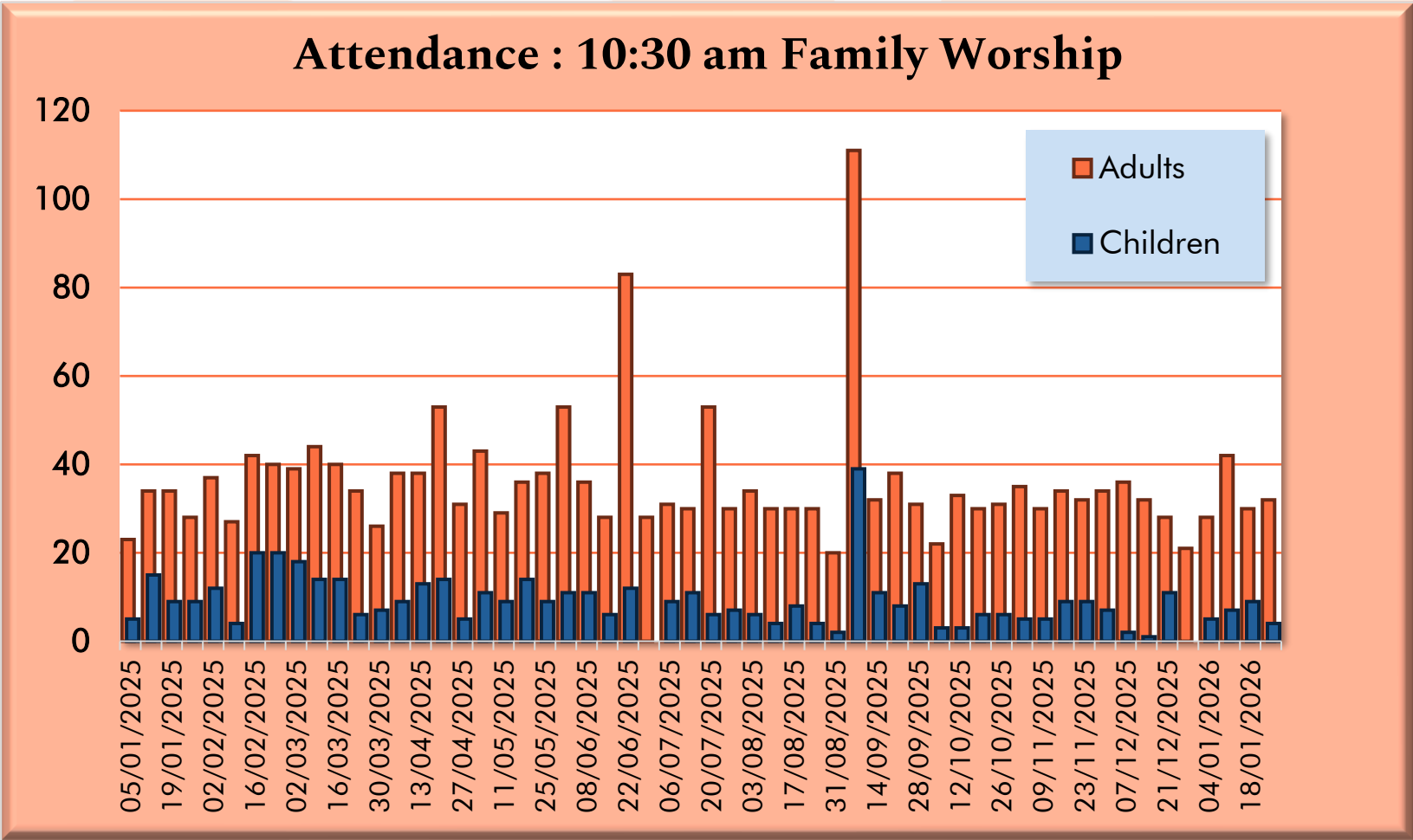
Weekly attendance of Morning 9:00 am Services at St. Andrew's (Adults and Children)



Average Ratio of
99.9% Adults
0.1% Children

Sunday Attendance

Weekly attendance of Morning 10:30 am Services at St. Andrew's (Adults and Children)



Average Ratio of

81.4% Adults

18.6% Children (under 16)



Worship

Worship Style



Worship at the 10:30 am service is free and passionate, with a desire to see God glorified. There are times of spontaneous worship, encouraging the congregation to express their own personal worship and members may share an encouraging verse or word.

The songs are mostly contemporary worship songs. Extended worship features at the start of the service and usually concludes the service, during

which there may be a time of prayer ministry for needs and healing. Our worship is led by a small Worship Team or by visiting local worship leaders. When musicians are not available, we use music videos.

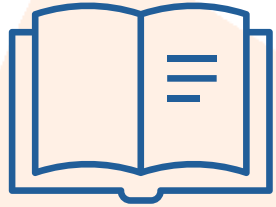
Recognising that this style is not for everyone, a more traditional style of worship is found at the 9am Holy Communion service each week which is also well attended.



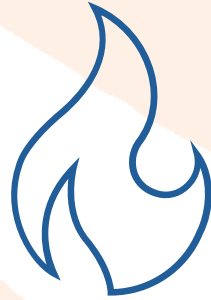


Who we're looking for

We are looking for a vicar who ...



Is a Bible-believing, prayerful individual who teaches biblical principles from the pulpit and by example



Is filled with the Holy Spirit, listening to Him, led by Him, and operating in His ministry



Is passionate about Jesus, preaching and teaching to help others grow in faith and maintain a powerful spiritual life



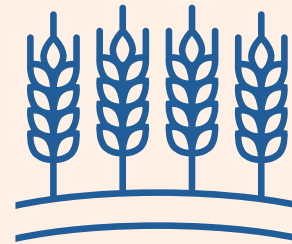
Motivates others to develop and use their God-given gifts in service to the Kingdom of God



Will promote and encourage genuine worship that draws people closer to God



Has a heart for reaching the lost and those in need and for leading and equipping others for outreach



Has a desire to see growth in the Kingdom of God



Will work to build and sustain relationships within the wider community and demonstrate the love of Jesus in Sneyd Green



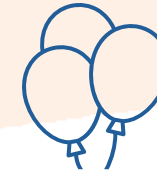
Opportunities for Growth

Opportunities for Growth

7 Challenges for a New Vicar



Reach the minority cross-section of the community that is not reflected in our congregation.



Explore innovative ways of engaging with children, young people and adults.



Ensure our worship reflects who we are and inspires all.



Explore and develop areas that have potential to grow.



Strengthen existing pastoral support for our older population and vulnerable groups.



Reinvigorate church finances to continue to generously bless and serve the community.



Identifying and filling key roles in the church.





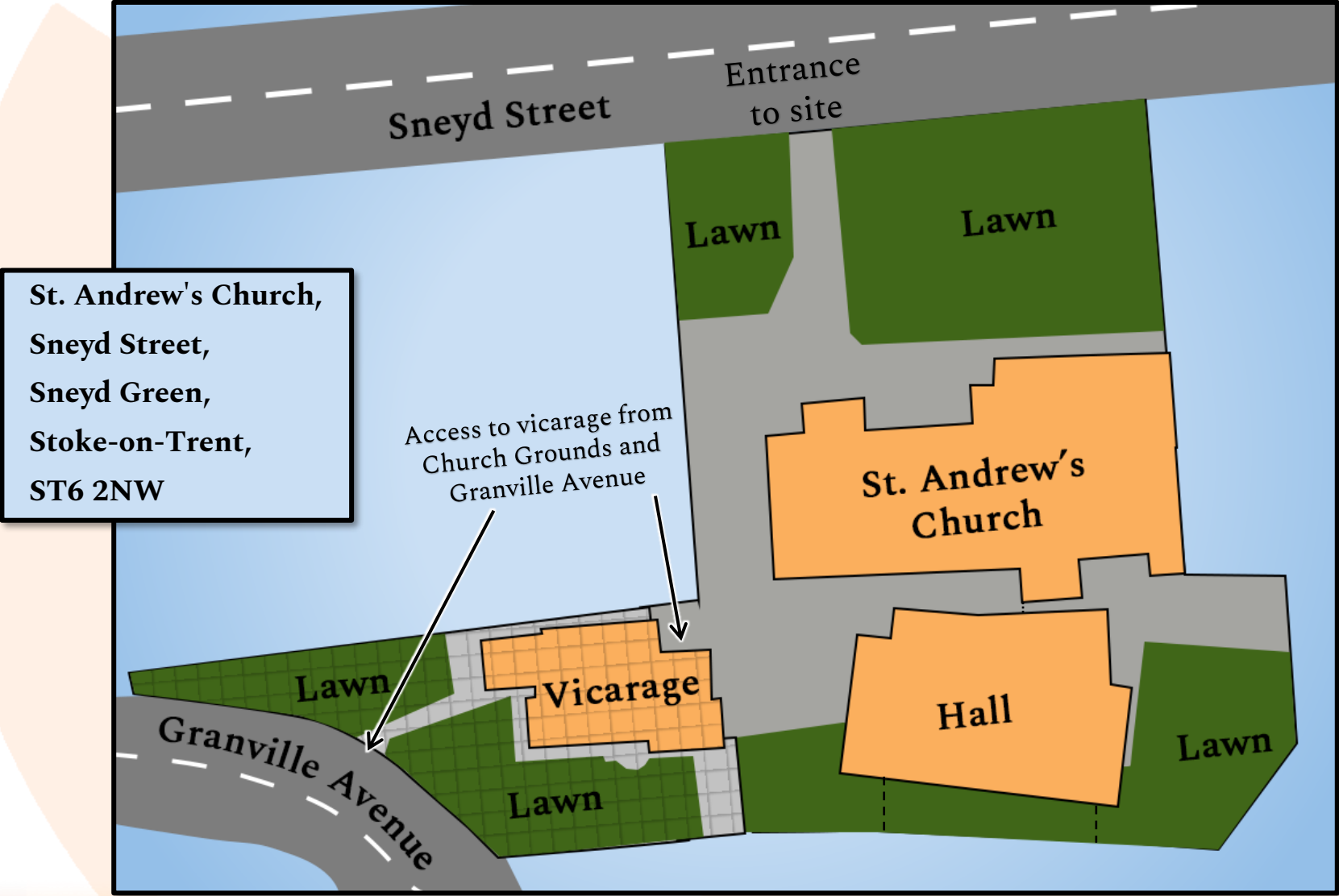
Please scan this QR Code to experience a guided tour of the church building featuring voices from St. Andrew's past and present.

<https://youtu.be/pH2KxshkBRE>



The Church Site and Buildings

Site Layout



Accessibility



At St. Andrew's we firmly believe in making everybody welcome and no-one feeling excluded and this means facilitating access to everyone.

There are a number of ways we have tried to help people with disabilities or particular needs feel fully integrated into the Church Family.



Disabled toilet (Church Hall)



Projected Song Lyrics and media



Step-free access to church and Hall including Communion.



Livestream Services for those who can't be in the building.



Digital Sound System amplification



Ear Protectors for those sensitive to loud sounds.



Hearing Aid Loop System



Fidget Toys for those who need them.



Large-print orders of service



Break-out Room for those who need a moment.

Church Building



The Church building has a spacious step-free area with chairs that can be moved around to accommodate a wide variety of activities.

There are 130 seats in the main body of the church and 26 in the chancel.

Alongside the main carpeted worship space, the church offers a prayer room and storeroom within the chancel, a Vicar's vestry, a small kitchen, two toilets, and a crèche or quiet room, providing flexible facilities for all ages.

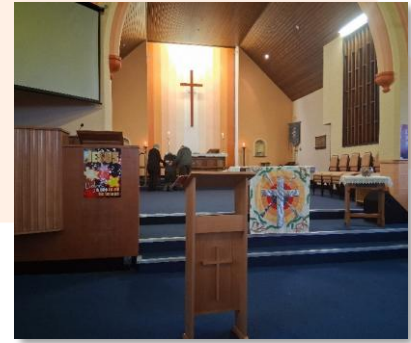


There is a stone font at the back of the church and bookshelves of Bibles and curated christian literature that can be borrowed.

The building is heated from a central heating system located in the cellar.

A modern digital sound system, including a hearing loop, supports multimedia use during worship and enables the live streaming of our main services to our YouTube channel.

Church Building



Church Hall



Hosting activities from Alpha courses to Zumba, faith lunches to holiday clubs, as well as the annual allotment competition, polling stations, and gatherings for a local Ghanaian church, St. Andrew's Church Hall is a vital hub for both church and community. The hall also houses the Church Office, several midweek groups, and the Star Community Café.



Large Main Hall

- Raised stage area
- Sound System
- Digital Projector
- Closable Hatch to Kitchen

Church Office

- Telephone
- Computer
- Photocopier

Fully equipped kitchen

- Refurbished in 2025

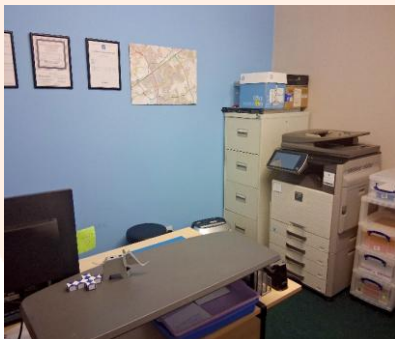
Toilets (x3)

- Male, Female and Wheelchair accessible with baby-change facilities

Storerooms (x4)

- 1x Chair Storage
- 1x Food Bank
- 2x Game Equipment

Church Hall



Vicarage



Downstairs

- Lounge
- Breakfast room
- Kitchen
- Study
- Back porch
- Toilet
- Garage

Upstairs

- 4x Bedrooms
(1 is en-suite)
- Bathroom with Shower and Toilet

Garden

There is a lawned garden at the rear of the Vicarage

- A lockable door separates the vicar's study and downstairs toilet from the rest of the house, providing privacy for the rest of family
- The Vicarage can be accessed from the church grounds or a back gate leading onto Granville Avenue



Vicarage





The Local Area

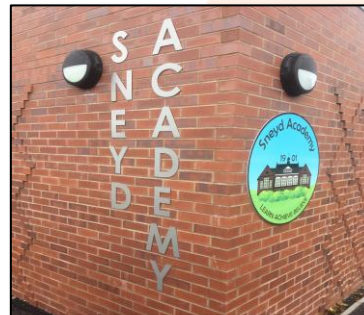


Sneyd Green



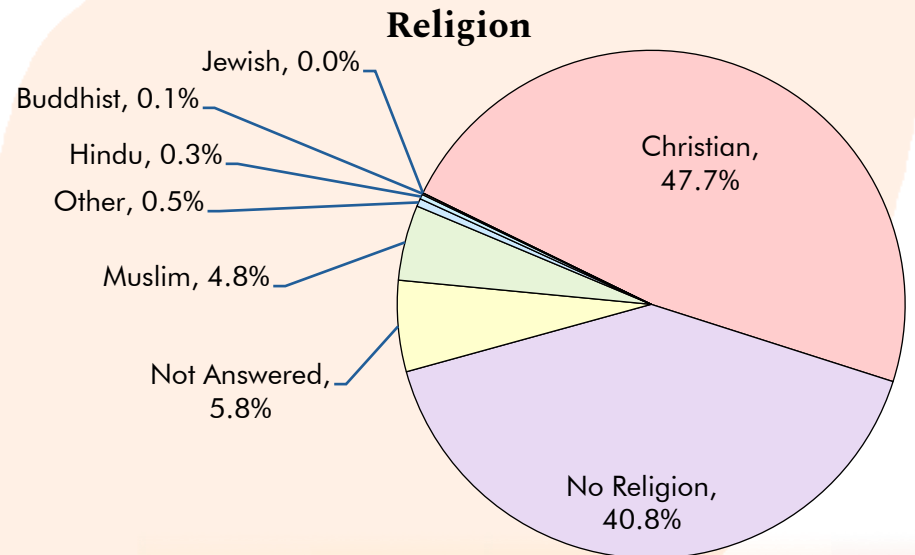
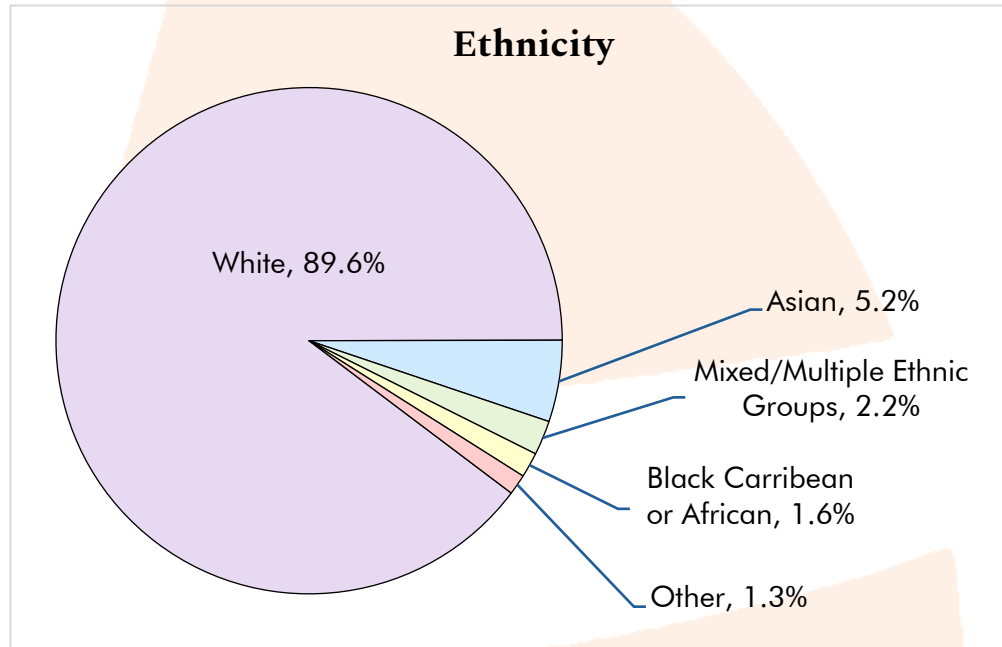
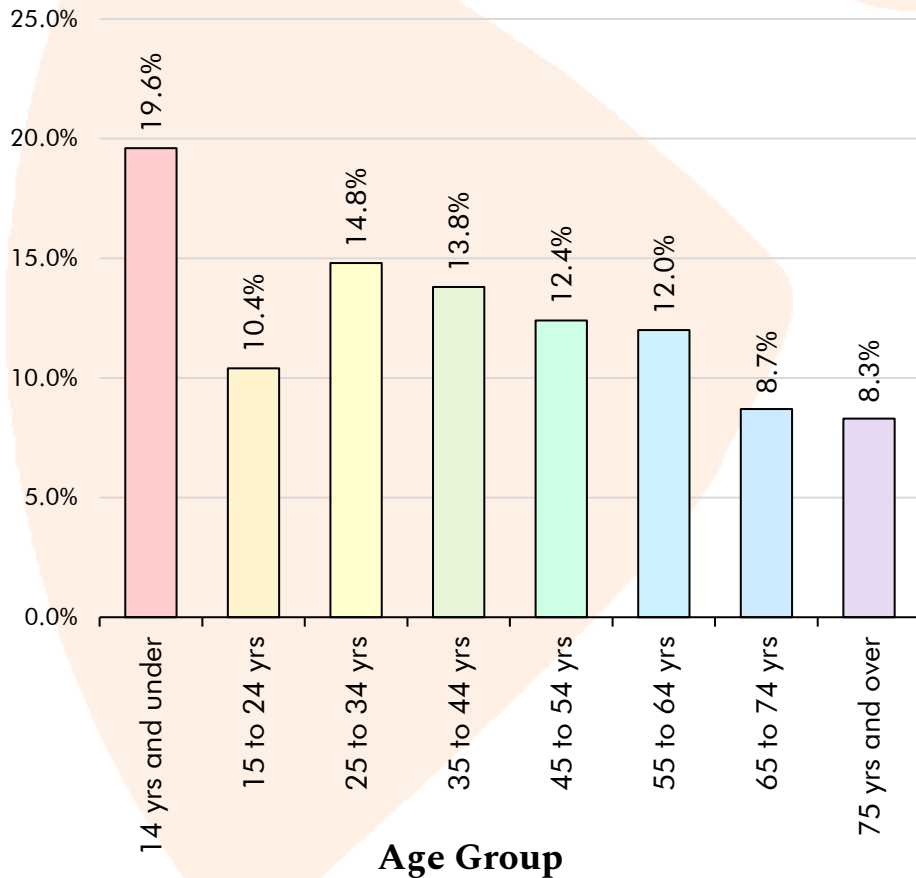
Sneyd Green is situated on the outskirts of Hanley, the vibrant shopping and cultural centre of Stoke-on-Trent. The parish benefits from excellent local amenities, including Central Forest Park - a beautiful 49-hectare green space in the heart of the city and includes a café, hills, a lake and grassland with plenty of paths for walking and cycling as well as an adventure play area. Forest Park is also home to Stoke Skate Plaza - Europe's largest street style skate park.

Sneyd Green is well served educationally, with two primary schools - Sneyd Academy and Holden Lane Academy and also two secondary schools, Birches Head Academy and Excel Academy, all within the parish. The parish is further enriched with two Methodist churches: Wesley Hall Methodist Church and Potter's House.



Demographics

ONS Census Data 2021
Sneyd Green and Smallthorne MSOA
(Middle Layer Super Output Area)



'The Potteries'

The World Capital of Ceramics.

Stoke-on-Trent, often known as The Potteries, is a city of character and distinction, renowned for its world-class ceramics heritage, creative spirit, and strong sense of identity.

Home to the Staffordshire Oatcake and Channel 4's 'The Great Pottery Throwdown', Stoke-on-Trent celebrated 100 years as a city in 2025. At its heart is a unique blend of industrial legacy including world famous potteries like Wedgwood, Emma Bridgewater and Moorcroft that still produce outstanding ceramics today and green spaces like the stunning Trentham Gardens.

Innovation, craftsmanship, and community continue to shape a forward-looking city that honours its past while embracing the future. With a proud history, a growing cultural scene, and an enviable central location, Stoke-on-Trent is a compelling place to visit, live, and invest.



The Wider Area



Stoke-on-Trent's central location, makes a wide range of stunning locations easy to reach, from nearby Biddulph Grange Gardens and Alton Towers Theme Park to some of England's most varied countryside.

To the north-east are Leek, the Staffordshire Moorlands, and the Peak District National Park extending into Derbyshire; to the north-west, the Cheshire plains and historic Chester, with the coast of North Wales beyond; and to the west, Shrewsbury and the Shropshire Hills.

With Manchester to the north, Birmingham to the south, and excellent road links via the M6 and with the A50 stretching from the city to the M1 and beyond, travelling across the country is straightforward.



Contact us

St. Andrew's Church,
Sneyd Street,
Sneyd Green,
Stoke-on-Trent,
ST6 2NW

PHONE

07401 241867

EMAIL

office@standrewssneydgreen.com



<https://www.standrewssneydgreen.com>