



Parish Profile

Team Vicar

**Holy Cross, Bilbrook and Christ the King, Aldersley
in the Tettenhall Regis Team Ministry**

Contents

Page 2	Welcome from the Bishop of Lichfield.
Page 3	Welcome from the Rural Dean of Trysull
Page 4	The Local Area
Page 6	Welcome from Richard Reeve our Team Rector
Page 7	Our Team Ministry
Page 9	The Challenge and the Person we are looking for
Page 10	The District Church of Christ the King, Aldersley
Page 14	The Vicarage
Page 15	The Parish Church of the Holy Cross, Bilbrook
Page 19	The Collegiate Church of St Michael and All Angels, Tettenhall
Page 21	The District Church of St Paul's, Pendeford
Page 23	The interview Programme
Page 24	Appendix. Lichfield Diocese Strategic Framework

Welcome from the Diocese of Lichfield

Cradled at the intersection of the Midlands and the North, and the interface between England and Wales, the Diocese of Lichfield is the ancient centre of Christianity in what was the Kingdom of Mercia. We are rightfully grateful for the inheritance we have from our first bishop St Chad that leads us to focus on Discipleship, Vocation and Evangelism as we live and serve among the communities of Staffordshire, and the Black Country. By answering God's call to minister in Lichfield Diocese you will benefit from being part of a wide family, mixing with people serving in a variety of contexts — from the grittiest inner-city neighbourhoods of Stoke and the Black Country, to the leafiest rural parishes of Staffordshire and Shropshire, to the sparsest upland communities of the Staffordshire Moorlands and Welsh Borders.



We embrace the widest spectrum of church traditions — evangelical and catholic, liberal and conservative, choral and charismatic — as we journey together in mission. As a colleague recently put it, it is our goal to be a 'spacious and gracious diocese'. It is my determination and that of my episcopal colleagues that you're calling to minister with us in Lichfield Diocese will be a time of encouragement, fulfilment, challenge and joy. You will not be alone in your ministry; as part of the wider team our colleagues among the diocesan staff keenly bring their various specialisms both spiritual and practical to offer resource and support as you serve our parishes, fresh expressions, schools and chaplaincies.

Lichfield Diocese is one of the largest in the country, covering an area of 1744 square miles and serving a population of more than 2 million. The diocese consists of three episcopal areas with three Area Bishops (of Wolverhampton, Stafford and Shrewsbury) ministering alongside the Diocesan Bishop, each overseeing a different geographic area. This indicates the diocese's commitment to its different contexts, and to the pastoral care of our clergy.

Our Diocese: vocation and mission of all.

The vision for the diocese is that all people, lay and ordained alike, will grow ever more deeply into their vocation as disciples of Christ. We hope to become a Church where all members are equipped to know they are called by God to worship and to be the eyes, hands, feet and mouth of Christ in their own contexts.

Staffordshire prides itself on being 'the Creative County': Shropshire is the birthplace of the Industrial Revolution, and the Black Country is renowned for its industry and all have significant opportunities for spouses who wish to develop careers in any sphere.

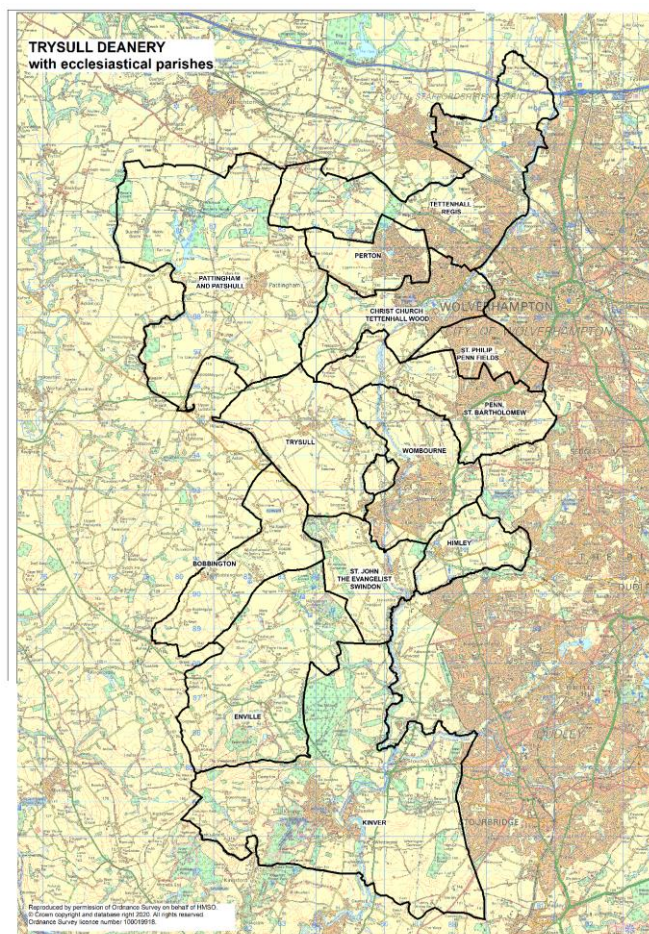
For those days off when you need space away from the parish, the area has everything you could wish for — except the sea: wild landscapes, cultured museums and stately homes, sports of many (including Premiership football) and at least two theme parks.

Welcome from the Trysull Deanery

Our Deanery

Trysull Deanery is a wonderfully diverse area right on the southern tip of the Diocese. We straddle the border between the City of Wolverhampton and South Staffordshire and our parishes range from inner city, to suburban and rural. The Deanery comprises 13 parishes and 21 churches served by 11.5 clergy (FTE). In addition to the stipendiary incumbents there are a number of SSM's, Curates in training, Licensed Readers, and retired clergy with PTO.

Three of the Deanery parishes have established Team Ministries and only one parish is a single church benefice. Our Deanery is busy and active, with great support from lay members of our church communities. The area is primarily residential with some light industry and also some farming in the more rural parishes. The clergy chapter meets regularly, and given the fairly large geographical area, combines a mixture of online and in-person gatherings. Our meetings combine prayer, inviting speakers, supportive conversations and social events. The hope is that we are a supportive, welcoming and friendly group. All our Parishes welcome the ministry of both men and women.



Our Deanery Vision

The vision, mission and ministry of the Diocese is focused around the three priority areas of discipleship, vocation and evangelism (DVE) - as we follow Christ in the footsteps of the first Bishop of Lichfield, St Chad. Over the past couple of years, across the Diocese, deaneries have been involved in the Shaping for Mission process which aims to strengthen our life of developing discipleship, encouraging vocation and inspiring evangelism in the context of our vision, while facing a significant reduction in financial income.

Within Trysull Deanery, Shaping for Mission has resulted in an active focus on how we might practically and spiritually collaborate better, supported by a Mission Enabling Team with representation from each team/benefice/parish. The team's vision is: to continue to deepen our collaborative support for each parish/benefice/team as they each seek to join in God's mission in their specific locations in many and varied ways.

Amongst the team's roles is encouraging and supporting mission ideas and plans in parishes. So far, collaboration has deepened through the creation of a Chapter for Lay Ministers; ensuring Deanery Synod meetings are relevant and offer space for members of our churches to share their experience, expertise and challenges; the creation of a network for those involved in children and youth ministries; and the production of a Deanery Prayer diary.

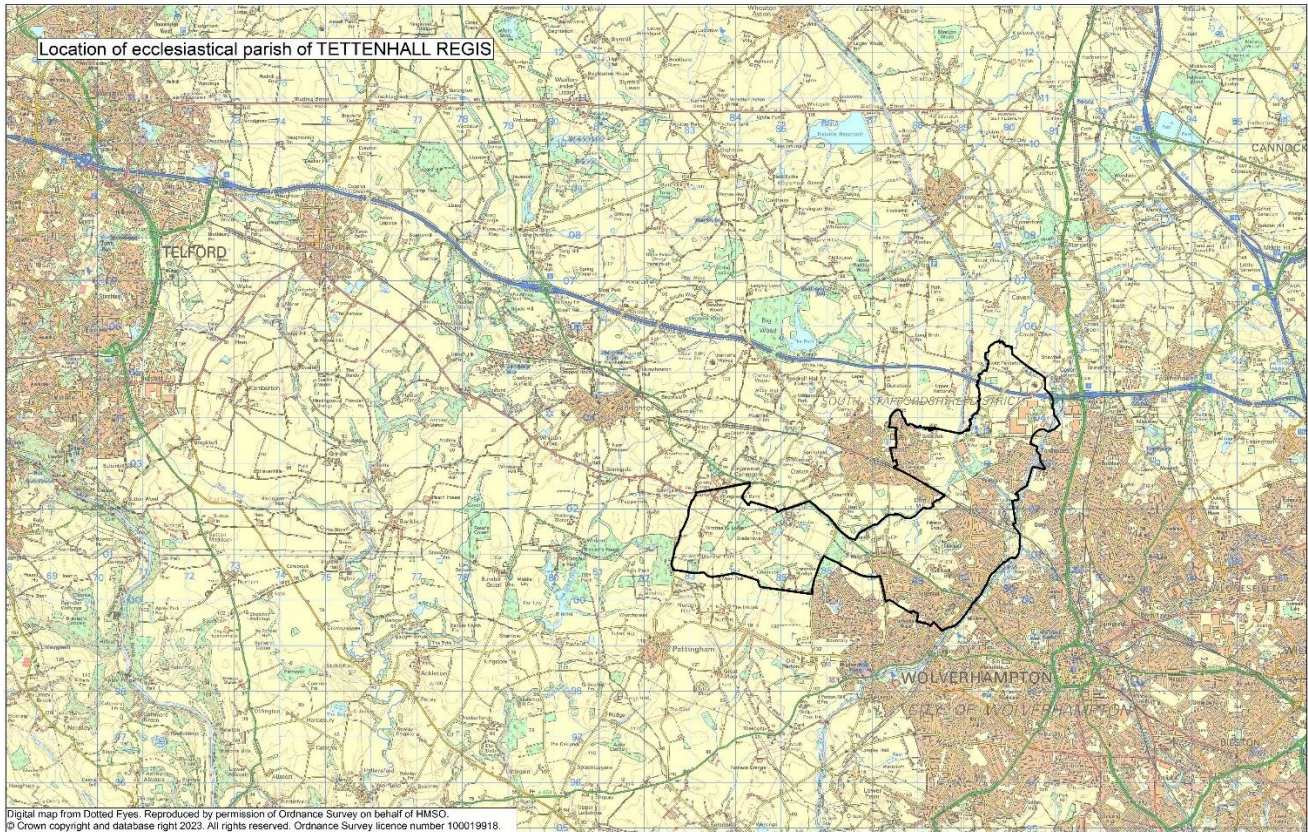
The Deanery clergy and congregations are committed to the continued development of our relationships and collaboration as we now engage with the emerging Strategic Framework for Discipleship, Evangelism and Vocation, recently presented by the Senior Staff, which builds on Shaping for Mission.

Rev'd Julia Cody

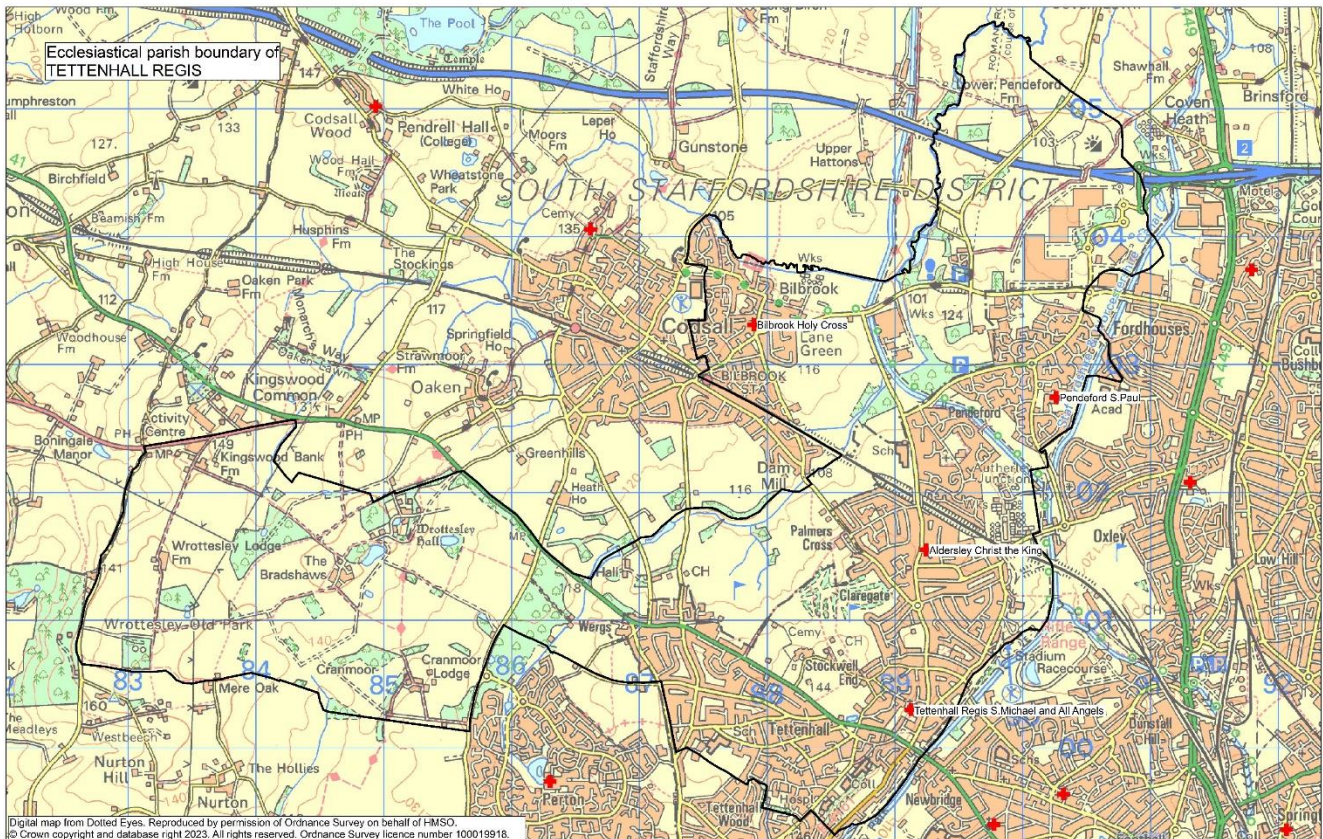
Rural Dean, Team Rector of Smestow Vale revjulia.rector@gmail.com revjulia.rector@gmail.com

The Local Area

The Parish in its surrounding area



The Parish



Road and rail links

The parish has great transport links. M54 junction 2 is at the northern boundary of the parish and the M6 and M5 are close by. Nearby Wolverhampton Station has excellent rail links around the country and Bilbrook Station provides more local services.

Leisure and pleasure



Baggeridge Country Park

For walkers there's, Cannock Chase, Staffordshire Moorlands and the Shropshire—Welsh borders. Baggeridge Country Park and Himley Park are nearby. There is an extensive canal network with the Shropshire Union and Staffordshire and Worcestershire canals going through the parish. If you're into more organised fun, Alton Towers and Drayton Manor Theme Park can provide it. Nearby museums, parks and historic houses include Wolverhampton Art Gallery and the RAF museum at Cosford, Wightwick Manor and Shugborough Estate. There are excellent sporting opportunities for both watching and participating—from premiership football to local golf, cricket and athletics clubs and facilities. Wolverhampton boasts the Grand Theatre as well as cinemas, restaurants and excellent real ale pubs. There's a range of options for shopping nearby including McArthur Glen Designer Outlet in Cannock, boutique shops in Shrewsbury and large malls in or near the urban centres. We're fortunate in being the home of many fine ales and beers brewed in Wolverhampton and the Black Country, as well as a local vineyard.



Tettenhall Village and the Upper Green

Welcome from the Team Rector



Thank you for your interest in this opportunity to serve God in an exciting and changing context with huge potential. Our Team Ministry serves expanding suburbs of Wolverhampton on the edge of the City and in South Staffordshire. There has been a Christian Church in Tettenhall since Saxon times. As the local population has grown over the last century there have been church plants at Holy Cross Bilbrook, Christ the King Aldersley and most recently St Paul's, Pendeford.

As churches we work to be welcoming, intergenerational, intercultural communities where everyone can discover God's loving purposes for their lives.

The last few years have not been easy for us and an important part of the challenge of the post, as Team Vicar of Aldersley and Bilbrook, is to rebuild the congregations after the covid pandemic. If you decide to apply for the post, you will be well supported by colleagues and able committed laity.

You will benefit from:

- Joining an experienced, caring and supportive ministry team.
- Administrative support with the Parish Administrator Keith McQuillen based at St Michael's Church Cottage.
- Full expenses paid
- Encouragement to take days off and holidays
- Recognition that in-service training and retreats are important
- An expectation that a realistic life/work balance is maintained

For an informal discussion about the vacancy please contact me on 01902 742801 or by email richardmreeve@aol.com to arrange a time.

Rev Richard Reeve

Our Team Ministry

The Parish

The Parish comprises the north-western suburbs of the City of Wolverhampton, with a population of 20,000 and the adjacent South Staffordshire village of Bilbrook with a population of 4,300 (and rising). There is considerable social diversity, including a suburban village, suburban estates, an outer estate with a UPA element and even a rural dimension with working farms. A large part of i54 Business Park falls within the northern part of the parish.

Our Ministry Team



The Team clergy are the Team Rector, the Revd Richard Reeve (since 2008 - based at St Michael's), the Team Vicar at St Paul's Pendeford, the Revd Dave Wills, an SSM curate the Revd Mark Cadwallader, two clergy with PTO and two Readers with PTO. The Parish Ministry Team consists of licenced ministers, lay and ordained, from across the parish. Several candidates from the Parish have gone forward for ordination in recent years. The Team Ministry is a training parish and candidates for ordination have been on placements from The Queen's Foundation. Although each member of the team has a home church or churches, we are all committed to work across the parish. The ministry team meets weekly for worship, reflection and planning. We enjoy working with one another and the mutual care and support have proved valuable in encouraging the development of ministry through ordination, curacy and beyond. We welcome the ministry of both women and men.

Church Schools

The Team is committed to education, not least by supporting the life of four Church Schools within the Parish - St Paul's CE (A), Primary; St Michael's CE (A) Primary; Bilbrook CE (C) Middle School; and St Regis School CE Academy (secondary). St Regis is served by a part time lay chaplain. There is also another Church of England secondary school (St Peter's Collegiate Academy) nearby. Clergy and lay people from the parish play a supportive role in the church schools as well as the many other schools within the Parish. The new Team Vicar will be committed to working with schools.

Pastoral Offices and Parish Administration



There is a PCC for the Parish elected from the four Churches and two Parish Wardens. All Four Churches participate fully in the PCC. Each Church has a District Church Council and District Wardens. The Parish Administrator Keith McQuillen is employed for 16 hours a week to support the mission and ministry of the parish.

Each church is responsible for its own finances although significant expenditure is referred with a recommendation from the DCC to the PCC. The Diocesan “Common Fund” is allocated to the Parish by the Diocese and then apportioned to each church by the PCC. Worship, mission, leadership; fabric and development tend to start within the individual churches. In recent years we have all benefited from a more coordinated parish wide approach to “mission action planning” to maximise the sharing of resources and improve communication.

Pastoral offices are coordinated centrally, with support and preparation for these offered by lay and clergy teams. Many take place in St Michael’s but are shared, often on a geographical basis, by the clergy across the team. In 2023 there were 5 weddings, but usually there are more (so far 9 are booked for 2025). We took 71 funerals in 2023, 26 in St Michael’s, 7 at Holy Cross the remainder at crematoria, cemeteries or burial grounds. At Christ the King, there have been 4 funerals in the first 6 months of 2024.

St Michael’s and the Team have provided good opportunities for the training of curates and in recent years. We have had ordinands in training and on placement in the Parish.

It is anticipated that the new Team Vicar will take a leading role in “mission action planning” in Aldersley and Bilbrook and be a significant contributor to parish wide development.

Discipleship.

Confirmation preparation for both adults and young people and marriage preparation is provided through the Team. During the year a variety of courses are offered. A Pilgrim group has been meeting for some years and there are regular bible study groups. Many of these are provided locally but welcome members from the other Churches. Before Covid there were regular retreats which we hope to restart in the near future. A study morning on “Exploring your Gifts.” was recently led by the Diocese Lay Training Officer. 20 people attended and there was representation from all four churches.

The Challenge.

You will work as part of the team serving the whole parish. As Team Vicar of Christ the King and Holy Cross, those churches and surrounding communities will be the focus of your ministry. The Diocese has a Strategic Framework (see Appendix) with priorities of discipleship, vocation and evangelism. The Framework and priorities inform the challenge:

- To listen, discern and develop with our congregations a strong and strategic view of mission and outreach, building on our strengths and opportunities as we continue to recover after COVID.
- To bring life, warmth and vitality to our worship, being sensitive and open to the varied worship traditions of the team churches.
- To encourage the growth of the Christian faith and commitment.
- To strengthen the links between the Churches and their local communities.
- To engage creatively with the new housing developments in Bilbrook.
- To enable the age profile of our congregations to grow younger and to embrace and encourage diversity.
- To support the relationship with schools and the Christian character of Bilbrook Middle School.

Our new Colleague will be a prayerful team player who will:

- Be a collaborative leader with strong interpersonal and teamworking skills.
- Appreciate working within an experienced, supportive and caring Ministry Team.
- Enjoy working with and in local communities.
- Have wisdom and discernment to encourage people to develop their abilities and gifts and to recognise God's calling in their lives.
- Be pastorally caring and relate to all ages and groups of people.
- Be an inspiring preacher and teacher.

The District Church of Christ the King, Aldersley

Pendeford Avenue, Aldersley, Wolverhampton, WV6 9EJ

This Church and district and Holy Cross, Bilbrook, will be the focus of your ministry as Team Vicar.



Our Community.

Aldersley, is a predominantly residential district, lying roughly 2 miles to the N.W. of Wolverhampton City centre. It includes areas known as Claregate, Blakeley Green and Palmers Cross. There is only a small percentage of social housing. Aldersley has a very frequent bus service linked to the City Centre. Local shops and a large supermarket nearby can supply your needs. There is a small café, several take-away food outlets, and a local park with football & cricket pitches, gym equipment, children's play area and pavilion. We have two pubs serving food and a real ale micro pub! Aldersley has two primary schools and a secondary academy and several pre and nursery schools including one in the Church Hall.



Aldersley Leisure Village offers: sports halls, an athletics track, health and fitness suites, synthetic turf pitches, sand filled synthetic turf pitches, grass pitches and fitness studios.

The Church Leadership

Iggy Peters is our District Warden, The District Church Council with 8 members meets at least 5 times a year. Iggy is also our Safeguarding Officer.

Our Church and Community Hall.

Christ the King was built in 1956 to meet the needs of an expanding suburb; the attached hall was built a few years later. The Church and Hall stand well back from road with large car park in front. Christ the King was built as a community church with the sanctuary at one end and a hall and stage at the other. The Church and halls are used daily by community groups.

Due to the large number of windows the church is very light and open. The Sanctuary area can be closed off and used as a small worship area. The church is not under faculty legislation.

Worship



Our worship is of the central eucharistic tradition with Sunday and mid-week services of Holy Communion. Eucharistic vestments are worn and there is provision for the sacrament to be reserved.

Seasonal service booklets drawing from Common Worship Resources are used. There is a monthly healing service and special services on Maundy Thursday and Good Friday.

At present we do not have a regular organist, our services are accompanied by recorded music. Members of the congregation are involved in our worship, there are 2 servers, 6 Eucharistic ministers, 6 lead intercessions and 10 read the Old and New Testament Lessons.

Service	Frequency	Time	Average Attendance In 2023
Said Eucharist	Every Sunday	9.30am	18
Healing Service	3 rd Sunday	6.30pm	7
Said Eucharist	Every Wednesday	9:30am	6

2023 Christmas Attendance	34
2023 Easter Attendance	21

Pastoral Offices

There were no baptisms, weddings or funerals at Christ the King in 2023. This year (2024) 4 funerals have been held in church. Most of the occasional offices from Aldersley take place at St Michael's with the service being led by our Team Vicar. Christ the King is licenced for Weddings.

The Congregation



Our Electoral roll is 48. 90% are resident within the parish. We have toddlers to ninety-year-olds, but few in the 11 to 60 age group. Social events are an important part of the life of Christ the King and attract large numbers of people. In the last year they have included a race night, quizzes with a fish and chip supper, popular board games gatherings and film nights.

Our Halls

The hall is used daily in school terms by a well-known and well-run pre-school. Other users include Rainbows, Brownies and Guides, Zumba, Slimming World, Yoga, a choir, plus occasional parties. Our users are looking forward to meeting and working with our new Vicar. Both halls have their own entrance and toilet facilities. This allows each hall to be used independently. Our halls have wheelchair access, and the flexible seating allows wheelchairs to be positioned in any part of the building. To the rear of the church is a children's play area and lawn.

The front garden is used at Easter and Christmas to display Nativity and Holy Week scenes, attracting good comments from both church users and the local community

Stay and Play



A growing and successful Stay and Play group for babies and toddlers, resourced by church members from across the parish meets every Monday morning in church.

Church Finances

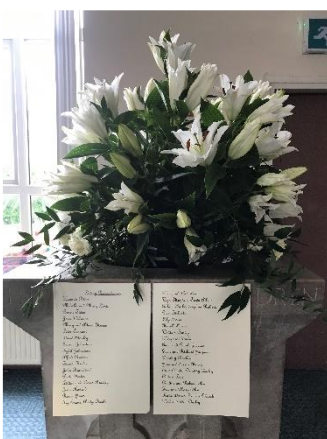
Our income for 2023 from direct giving (Including gift aid), and fund raising was	£13,286.
Our Income from letting our Church Hall was	£13,511
Our investment income was	£665

Giving a total income of	£27,830
--------------------------	---------

Our expenditure on the Diocesan Common Fund	£12,570
Church maintenance, heating and lighting	£6,250
Other expenditure	£1,866

Giving a total expenditure of	£20,686
-------------------------------	---------

The Common Fund is determined on a parish basis and Christ the King pays £12,570. This is a reduced contribution after negotiation with the Diocese. The usual assessment is based on a half time post. The church meets its commitments each year. Income from hall and church lettings and generous donations from members have allowed significant improvements to the church and hall. Our Treasurer is supported by a small team, including a Gift Aid secretary.



Outreach



In the Aldersley district, Blakeley Green House, operated by Green Square Accord, provides supported housing for 13 individuals with severe and enduring mental health problems. The basis for care and support at Blakeley Green House has been rooted in Christian ethos and tradition and is supported by the Blakely Green House Trust. The valued support given by the clergy, trustees, and parishioners is very important and very much appreciated by all. The Trust provides a Chaplain, who in recent years has been the Vicar of St. Paul's. Once a month a Communion Service is conducted by the chaplain in the dedicated chapel. Other services include a Carol Service, an outdoor Good Friday Service and a Rogation Service. The Trust supports the tenants in other ways such as buying birthday presents. The Trust has been chaired by the Bishop of Wolverhampton.

The Vicarage

76, Tynninghame Ave, Tettenhall, Wolverhampton, WV6 9PW.



The Vicarage is a comfortable centrally heated detached 1970's four-bedroom family house in a quiet residential street. Downstairs it has a spacious kitchen, utility room living room, and study. The rear secluded garden backs on to the South Staffs Golf Course. It has a garage and off-road parking for two cars. The Vicarage is centrally located within the Parish being approximately 0.5miles from Christ the King, 1mile from St Michael's, 1.8miles from Holy Cross Church and 2miles from St Paul's.

Holy Cross, Bilbrook

Bilbrook Road, Bilbrook, South Staffordshire, WV8 1JN

This Church and district, and Christ the King, will be the focus of your ministry as Team Vicar.

Our Community



Bilbrook is a village in the district of South Staffordshire, with a population of nearly 5,000 people living in over 2,000 households. It is nestled between the City of Wolverhampton and the green hills of Shropshire. Travelling on horseback, John Wesley visited Bilbrook on at least nine occasions to preach. The first of his visits was in April 1751.

Dating back to 1898, Holy Cross is the only church in Bilbrook. At the time, so few families lived in the area that this small church was quite adequate for the local people. In 1966 the church was transferred from Tettenhall Regis to Codsall and was extended to meet the needs of the rapidly growing village. It became a parish church in 2005 and returned to Tettenhall Regis as part of the Team Ministry in 2014.

Once again, the population is growing rapidly with significant recent housing development and a further large development planned.

Worship



Holy Cross is of a sacramental worship tradition. Eucharistic vestments are worn, the sacrament is reserved, and incense was used until recently. It benefits from its close ties with the local community and the church building is open for private prayer on a daily basis throughout the year.

Whilst Holy Communion on a Sunday is our main service of the week, the congregation is supportive of many different forms of worship with regular 'Songs of Praise' and Memorial Services.

There are 51 people on our Electoral Roll. 3 members of the congregation are Eucharistic ministers, 3 lead intercessions and 6 read the Old and New Testament Lessons. Music has always been important to the life of Holy Cross Church. Whilst the pandemic altered some of our traditions, we are currently enjoying a mix of recorded and live musical accompaniment, relying on the talents and abilities of members of the congregation.

Service	Frequency	Time	Average Attendance 2023
Parish Eucharist	Sunday	11.00am	38
Eucharist	Thursday	9.30am	2

2023 Christmas Attendance	84
2023 Easter Attendance	61

Pastoral Offices in 2023

Holy Baptism	1
Weddings	0
Funerals in church	7
Funerals at the crematorium	4

Some occasional offices from the village are held at St Michael's led by our Team Vicar.

Leadership

Mike and Sue are our District Wardens. There are seven members of the D.C.C. Jill is our Safeguarding Officer. Holy Cross participates fully in the Team Ministry.

Our Congregation

Our Electoral Roll is 51. The congregation has a wide age range from toddler to members in their 90's. The congregation has a caring nature where all ages are welcomed and cherished. A small Garden of Remembrance has been established adjacent to the rear of the church building for cremated remains. This has proved popular with local people as it is both local and easily accessed.

Our Church Hall



Alongside the church is a Church Hall which is kept in good order and has been refurbished in recent years. Many community groups use the Hall and currently on offer there are two dancing schools, Folk Dancing, Ballroom Dancing, Yoga, Zen Yoga, Keep Fit for the over Fifties, Zumba and Pilates.



The Hall is used as a meeting place for the local people when a Coffee Pop-In attracts many people including church members and those on the 'fringe' of church membership. A knit and natter group also meets in the Hall. Holy Cross is well known for putting on a 'good spread' for both formal occasions and events in our social calendar.

Schools Ministry and Community Ministry



There are two schools in the village: Lane Green First School and Bilbrook C of E (VC) Middle School. The schools share the same site and head teacher. The Team Vicar has an important role in both schools. School Eucharists have been part of our tradition and we are pleased to welcome school groups into church for special occasions.

'The Friends of Bilbrook' is a non-profit community group whose main aim is to improve the environment we live in and the open spaces around Bilbrook. Members are residents who have a keen interest in the local environment and wish to create a sustainable programme of environmental care in which the larger community can also contribute. We work closely with 'The Friends' and share 'Forest Church' worship in the local wood.

We work closely with the community, organising monthly Film Nights, Skittle Evenings and Quizzes in the Hall and participating in events that are organised by the Parish Council on the Village Green.

Our Finances

Our income for 2023

from direct giving (including gift aid.), grants and fund raising was	27,529
Our Income from letting our Church hall was	17,422
Our investment income was	201
Fees	1,767
Giving a total income of	£46,919

Our expenditure in 2023

The Diocesan Common Fund	20,000 (special assessment)
Church maintenance, heating and lighting	8,078
Expenses and fees	3,460
Services	3,150
Hall expenses	6,877
Other expenditure	1,640
Giving a total expenditure of	£43,580

Our hopes are to continue to grow our congregation so that we can further support the thriving community of Bilbrook. We recognise that the world is changing and are keen to find new ways to engage with our community.

The Collegiate Church of St Michael and All Angels, Tettenhall

Church Road, Tettenhall, WV6 9AJ



Our Community

St Michael's is in an established, largely prosperous, suburban area of mostly private, but also some local authority housing. The church is a quarter of a mile or so from the popular Tettenhall Village and the leafy Upper Green, with Wolverhampton Cricket Club, a paddling pool and adjacent South Staffs Golf Club. Our foundation is thought to go back to the latter part of King Edgar's reign (959-975), though nothing remains of the Saxon church. On 2 February 1950 the church building was gutted by fire, leaving only the 14th century tower and the Victorian porch. The church was rebuilt in modern Gothic style and consecrated on 16 April 1955. It is attractively set near Lower Green and close to St Michael's School.

Worship



The principal Sunday Service, in the Modern Catholic Tradition is a Sung Eucharist with incense, servers and a small choir which is augmented on special occasions. St Michael's School are encouraged to take part. The 6.30pm Evensong can sometimes be replaced by special seasonal services during Advent and Lent and occasional other services. There is a monthly Choral Evensong.

	Frequency	Time	Usual Attendance 2023
Said Eucharist CW Order 1 BCP on the last Sunday	Sunday	8.00am	8
Sung Eucharist CW Order 1 with Sunday School	Sunday	10.30am	65
BCP Evening Prayer	Sunday	6.30pm	6
Choral Evensong	Monthly	6.30pm	32
Eucharist	Wednesday	10.30am	6

2023 Christmas attendance	357
2023 Easter attendance	148

Pastoral Offices

2022 Baptisms	19
2022 Weddings	14
2022 Funerals in church	27
2022 Funerals at the Crematorium	38

Activities and Facilities



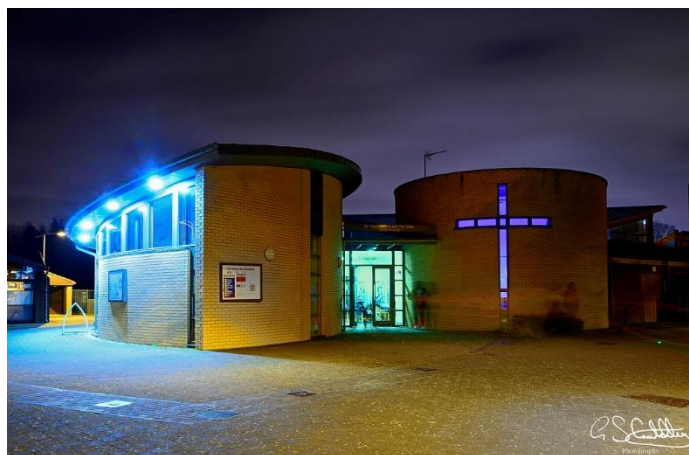
Facilities at the Church are rather limited for activities other than worship but the nearby Church Cottage is used by the Church for the Parish Office, meeting rooms, Sunday School and some community and church activities. There is a Parish Centre in Tettenhall Village which is occupied by the local library and a Pre-School, leaving a room for Church use. This provides a small but convenient location in the village for community activities.

Mission and Ministry

The Mission and Ministry of St Michaels is quite traditional. There is a strong pastoral emphasis supported by a Pastoral Team and significant ministry in care homes for the elderly. We have close links with St Michael's School and St Regis School through clergy and foundation governors. Both schools regularly use the church for worship.

St Paul's Pendeford

Whitburn Close, Pendeford, Wolverhampton, WV9 5NJ



Our Community

St Paul's serves an area with a mix of private and social housing on the fringe of the city. The Church was established in the newly built St Paul's C of E (VA) Primary School in 1981. It has been extended twice, most recently in 2007 when the new chapel and community café, the Oasis were built. The Church is located next to a cluster of shops including a large Morrisons supermarket.

St Paul's has an informal Eucharistic tradition drawing on the wide variety offered by Common Worship within a relaxed contemporary setting. On the second Sunday of the month there is a lay-led all-age Service of The Word. Rainbows, Brownies and Guides meet at St Paul's and take part in Parade services.

We meet for worship in the school hall with the chapel becoming the sanctuary. The chapel is a place for quiet prayer and reflection and is open during the day.



2023 Sunday Service	
Holy Communion 3 rd Sunday Service of the Word	39

2023 Christmas Attendance	90
2023 Easter Attendance	59

Pastoral Offices

2023 Holy Baptism	3
-------------------	---

Our Leadership

Our Electoral roll is 91. St Paul's has an active DCC. Our working groups report to the DCC; these include Finance, Pastoral, Buildings, Oasis, Social and Charities and Safeguarding. St Paul's takes an active part in the Team Ministry.

Church and School.

The Church and School have a close relationship which has strengthened in recent years, with the Vicar leading school worship once a week and taking a whole school communion service each term.

Contact with the Community.



St Paul's runs social and charity events which attract a wide range of people from Church, the Parish and the local area. A weekly notice sheet is produced, and a bimonthly newsletter is sent out to over 100 people.

The Oasis Café

The Oasis café is a wonderful and welcoming interface between church and community. The café is run as a private business, under an agreement with the Church. It is open during the day, Monday to Saturday. St Paul's and other community groups make use of the space in the evenings for meetings.



Thank you for taking the time to read the Parish Profile.

If you would like to find out more and for an informal conversation, please contact the Team Rector, Revd Richard Reeve

01902 742 801 or richardmreeve@aol.com

Closing Date for Applications	1 November 2024
Familiarisation Day –	20 November 2024
Interview Date	5 December 2024

Appendix. Diocese of Lichfield Strategic Framework.

<https://www.lichfield.anglican.org/shaping-for-mission/>



Shaping
for Mission
Strategic
Framework
2024 -2030

growing younger

